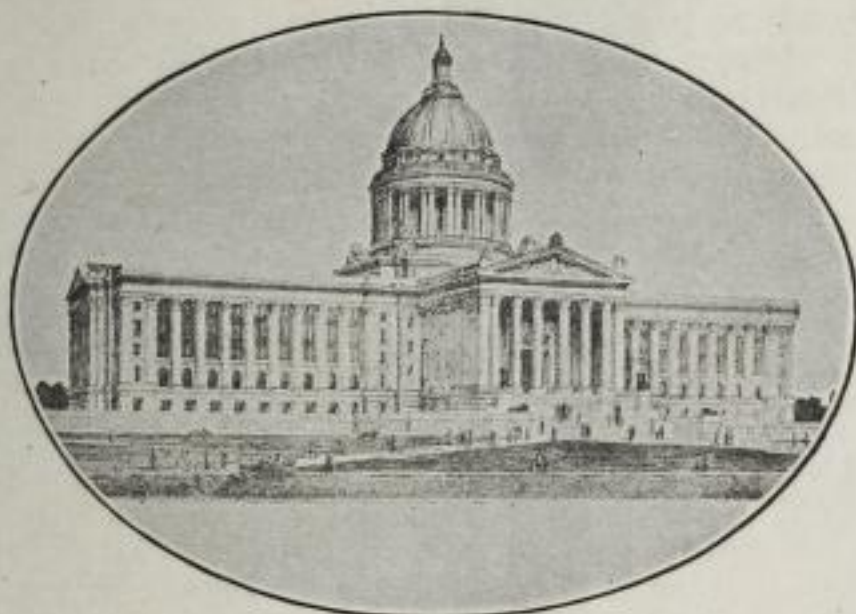


692.3
.C53X
Showing all the Best Roads

CLASON'S OKLAHOMA GREEN GUIDE

State and City Maps, Auto Road Logs, Railroads;
Commercial Index of Towns giving Hotels,
Industries, Altitudes, Population, Etc.



State Capitol at Oklahoma City

INDEX

	Page		Page
Auto Road Section	14	Oklahoma City Map.....	12
Cities and Towns.....	19	Railroads	18
Colleges	17	Rivers and Creeks.. ..	39
Counties	17	State Institutions.....	18
Mountains.....	18	Tulsa Map.....	10

Published by THE CLASON MAP CO., Chicago, Denver

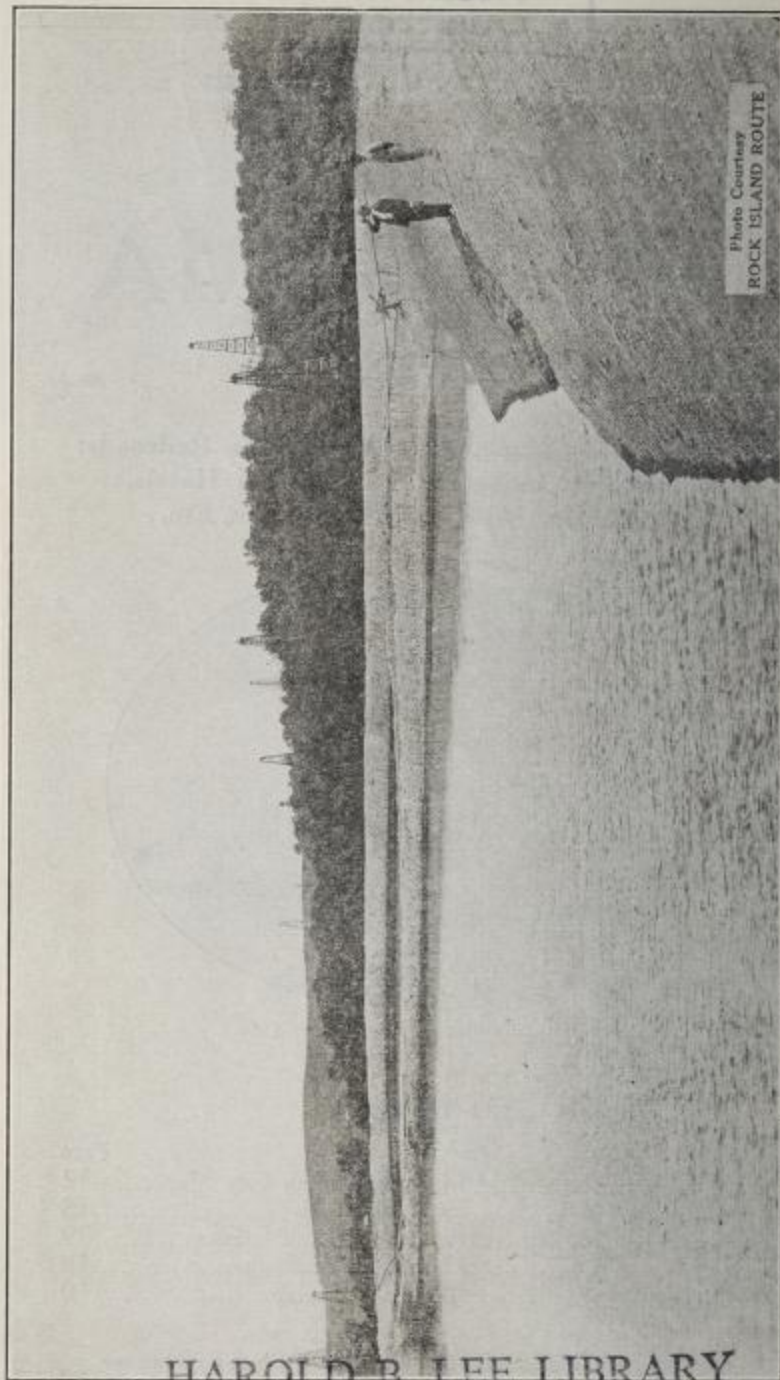


Photo Courtesy
ROCK ISLAND ROUTE

Lake of Crude Oil, Showing Emergency Storage Reservoir for the Outpourings of a New Gusher. Oklahoma Has Over One Hundred Producing Oil Fields

HAROLD B. LEE LIBRARY
BRIGHAM YOUNG UNIVERSITY
PROVO, UTAH



AT THE END OF THE RAINBOW

By George S. Clason

From time immemorial the "Pot of Gold at the End of the Rainbow" has been the lure that drew men of imagination and energy into new countries. As early as 1514 treasure seekers entered the present State of Oklahoma. Hernando Coronado, a Spanish adventurer, with his band of followers, passed through Oklahoma only twenty-two years after the discovery of America, so historians tell us. These bold Spaniards were seeking the end of the rainbow. They called it Quivira, the land of fabled wealth.

Without knowing it, they passed over a district that was destined eventually to produce more wealth than their wildest imagination could conceive. In the past twenty years the output of the oil and gas fields of Oklahoma has exceeded in value the products of all the gold mines of the North American Continent during the same period.

THE GREAT RUSH INTO OKLAHOMA

At high noon on April 22, 1889, another band of seekers after the end of the rainbow stood lined up around the boundary of the present State of Oklahoma awaiting the bugle call of the U. S. Cavalry that should announce the throwing open for entry of an entire commonwealth. They were serious, eager men from North and South, and many of them were chosen by a generous fate to participate in those treasures that Don Coronado could not have used had he found them.

As the clear notes of the bugles sounded forth that momentous day the greatest land rush in history was on. To all parts of the state rushed these hardy homeseekers and staked their claims. What had previously



Take a GREEN GUIDE with you, and you never will go wrong



A Beauty Spot in Platt National Park at Sulphur, Okla.

been cross-road settlements and Indian trading posts, became almost over night thriving towns and villages. The vacant prairies were turned into farms, and the hustling, busy commonwealth of Oklahoma had been born.

HOW A STATE WAS MADE IN RECORD TIME

Neither before nor since has a government of such proportions been founded and built in the same length of time. On November 16, 1907, just eighteen and one-half years after the first white settlement, Indian Territory and Oklahoma Territory were admitted to the Union of States under the name of Oklahoma.

AGRICULTURE, OKLAHOMA'S GREATEST INDUSTRY

While much attention is given to the wonderful industrial growth of Oklahoma, its possibilities in agriculture stand out as the predominant feature. Adapted to diversified crops, here may be raised corn, oats, wheat, prairie hay, fruit and berries of all kinds suited to a temperate zone, kafir, native grasses, livestock, alfalfa, timothy and red-top clover, cotton, Bermuda grass, Japan clover, kafir sorghum, Soudan grass for hay, peanuts, broom corn, milo and feterita. Garden truck is prolific and is of commercial value. Cotton is king in the southern counties. It is grown wherever the soil is suitable, but it thrives best in the middle and southern counties.

Oklahoma is a fruit country. Nature so ordained it, and planted here no less than twenty-five varieties of wild fruits. The apple, the Elberta peach and the other tree fruits prove quite profitable. Apple orchards thrive especially in the limestone soil of Delaware, Mayes, Cherokee and Adair counties of the northeast. Peaches grow in abundance and to great perfection in middle Oklahoma.

FARM OPPORTUNITIES FOR THE NEWCOMER

Oklahoma has proven to be the "end of the rainbow" for thousands of its farmers. The discovery and development of the vast oil fields made many landowners independently wealthy. Later the discovery of the extensive lead and zinc-bearing veins did the same for many more. The great industrial activities created by these industries developed a local demand for farm products that has brought a very general prosperity to the farmers of the entire state.

Oklahoma is a great farming state today, although still undergoing rapid development. Land in many localities can be secured at very reasonable prices and upon long-time terms.

The State of Oklahoma loans the school funds to farmers at 5 per cent, with the privilege of paying on the principal annually, to assist in buying and improving farms.

Here, those who want land, improved or unimproved, can find it at moderate prices, and by making their homes here they can grow up with the country and become independent just as the earlier settlers have done in other states.

The State Board of Agriculture at Oklahoma City will gladly furnish further information in regard to agriculture.

OKLAHOMA LIVESTOCK, BLUE RIBBON WINNERS

Immediately associated with farming in Oklahoma is the livestock industry. Large numbers of sheep, horses and cattle are raised. Especially important are the mules, which are the equal of the far-famed "Missouri mules." Thoroughbred livestock from Oklahoma may usually be found adorned with blue ribbons at the big national stock shows of the country.



Sorghum as It Grows in Oklahoma



Blue Ribbon Winners Thrive on Oklahoma Pastures

MINERAL RESOURCES OF FABULOUS VALUES

In the value of natural mineral resources Oklahoma is one of the richest states in the Union. These include oil, gas, coal, lead, zinc, asphalt, shale, clay, glass sand, sand and gravel beds, sandstone, limestone, marble, gabbro, cement, gypsum, salt, iron, manganese, tripoli volcanic ash, copper and mineral water.

Information about the state's mineral resources can be secured by addressing the State Geologist, Norman, Okla.

OIL FROM A HUNDRED PRODUCING FIELDS

Oklahoma leads all states in the production of oil. There are over 100 oil pools in the state, most of them being in the eastern half, but the oil-producing area is extending to the west. According to the State Geologist, over half of the state is in the probable oil-producing region. Landowners receive substantial incomes from leases, bonuses and royalties.

NATURAL GAS PIPED TO NEIGHBORING STATES

Oklahoma also leads in the production of natural gas. More than half the state is supplied with this cheap and convenient fuel. Not only are all the leading cities of the state supplied, but most of the towns and villages, and many farms in or near the gas wells have natural gas at a low price. Oklahoma gas is pumped to Kansas City, Topeka, Joplin, Wichita, Fort Worth and other cities outside of the state.

OKLAHOMA LEAD AND ZINC HELPED WIN THE WAR

Most of the lead and zinc is mined in the northeast corner of the state. Here are some of the richest mines in the United States. As in the case of oil and gas, the farmers' interest is chiefly concerned in leases, bonuses and royalties received, in addition to the excellent market afforded by the thousands engaged in mining.

COAL FIELDS OF VAST EXTENT

There are about 20,000 square miles of coal lands in about twenty counties of eastern Oklahoma. Most of it is high-grade bituminous coal. In many places coal crops out along the small streams, and the farmers strip it to secure fuel for home consumption. Small towns are supplied in this way. Millions of tons of coal are mined annually, adding in numerous ways to the industrial growth and general prosperity of the state.

Most of the gypsum is found in the western part of the state. There are ledges twenty to forty feet thick extending for a hundred miles or more. There are numerous large mills employed in manufacturing cement, stucco, alabastine and plaster of paris.

Deposits of asphalt are found in various places, mostly in southern Oklahoma. It occurs chiefly as rock asphalt, but it sometimes occurs in a nearly pure semi-fluid, viscid state. The abundance of this mineral and the low cost of mining make the asphalt industry most profitable. The asphalt deposits are estimated to contain 50,000,000,000 tons.

FINE FORESTS OF PINE AND HARDWOOD

The state contains about 3,500,000 acres of timber, of which 60,800 or more acres, lying in Comanche



Lumbering in the Hardwood Forests of Oklahoma



Cotton is King in the Southern Counties of Oklahoma

County, are a forest reserve. The timber areas include pine and hardwood. The pine forests grow in the Ouachita Mountains, which rise in the southeastern counties of McCurtain, Pushmataha, Latimer and Le Flore. The hardwood forests also are in the eastern end of the state. The hardwood trees are white oak, post oak, red oak, scarlet oak, hickory and black walnut, and the greater forests are in McCurtain, Pushmataha, Le Flore, Latimer, Adair and Cherokee counties. The other counties of this end of the state also contain hardwood timber.

THE INDIAN CITIZENS OF OKLAHOMA

There are few full-blood Indians, and still fewer blanket Indians in the state, and they in only certain localities. One might travel the state from end to end and not see a person he would recognize as an Indian. Some of the leading bankers, merchants, professional men, farmers and stock growers are Indians. Three members of Congress from Oklahoma are Indians. A United States Senator from Oklahoma is an Indian, and he is a leader in the Senate, being Chairman of the Finance Committee.

The Indians have no tribal government now. They are in all essential particulars just like other folks and live under the same laws. During the great war the Indian youths marched to the front side by side with the other patriotic sons of this great democracy.

LIBERAL EDUCATIONAL OPPORTUNITIES

Oklahoma has a permanent school fund (money, bonds and land) of about \$65,000,000. Liberal school laws guarantee the opportunity for at least a high school education to every boy and girl.

The public school system of the state comprises the usual ward and high schools in the cities, and district and

consolidated schools, of which there are more than 100, in the country. The larger cities have high school edifices of noble architecture and perfect equipment. That at Oklahoma City, costing \$750,000, is said to be one of the most complete high schools in the United States.

There are no mixed schools in the Oklahoma system of education. Separate schools of equal facilities and equipment are furnished for the two races in the several counties, and the law makes it compulsory for them to be so maintained. Likewise, the state maintains a separate university and normal school for negroes, and a university and normals for whites.

OKLAHOMA'S GREAT STATE UNIVERSITY

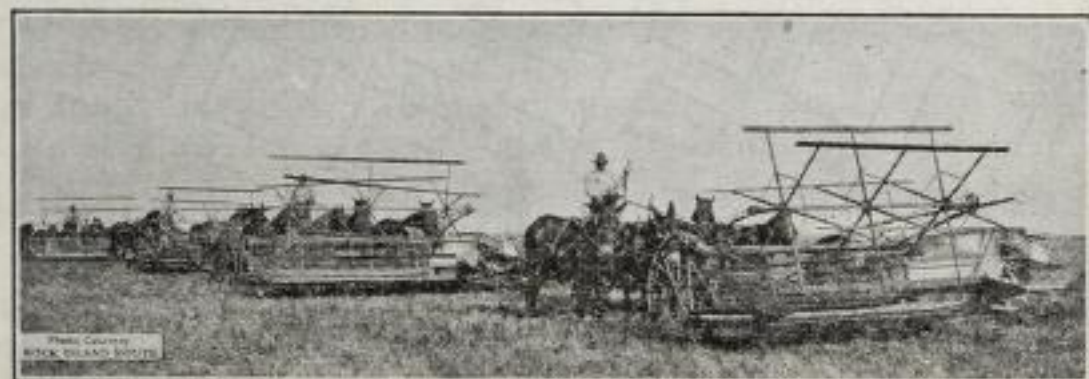
The seat of the State University is Norman, in Cleveland County. The Legislature appropriates liberally for the support of the institution. There are 200 instructors in the faculty and about 3,000 students. The courses of instruction are Arts and Sciences, Fine Arts, Law, Medicine, Pharmacy, Mechanical, Civil and Electrical Engineering, and Mining Geology.

OKLAHOMA AGRICULTURAL AND MECHANICAL COLLEGE

The Agricultural and Mechanical College is located at Stillwater, Payne County. There are 1,000 acres in the campus and experimental farms. The courses of instruction are Agriculture, Engineering, Science and Literature, Domestic Science and Economy, Teacher Training and Business. The complete course in Agriculture requires four years, and there are short courses of two and three years.

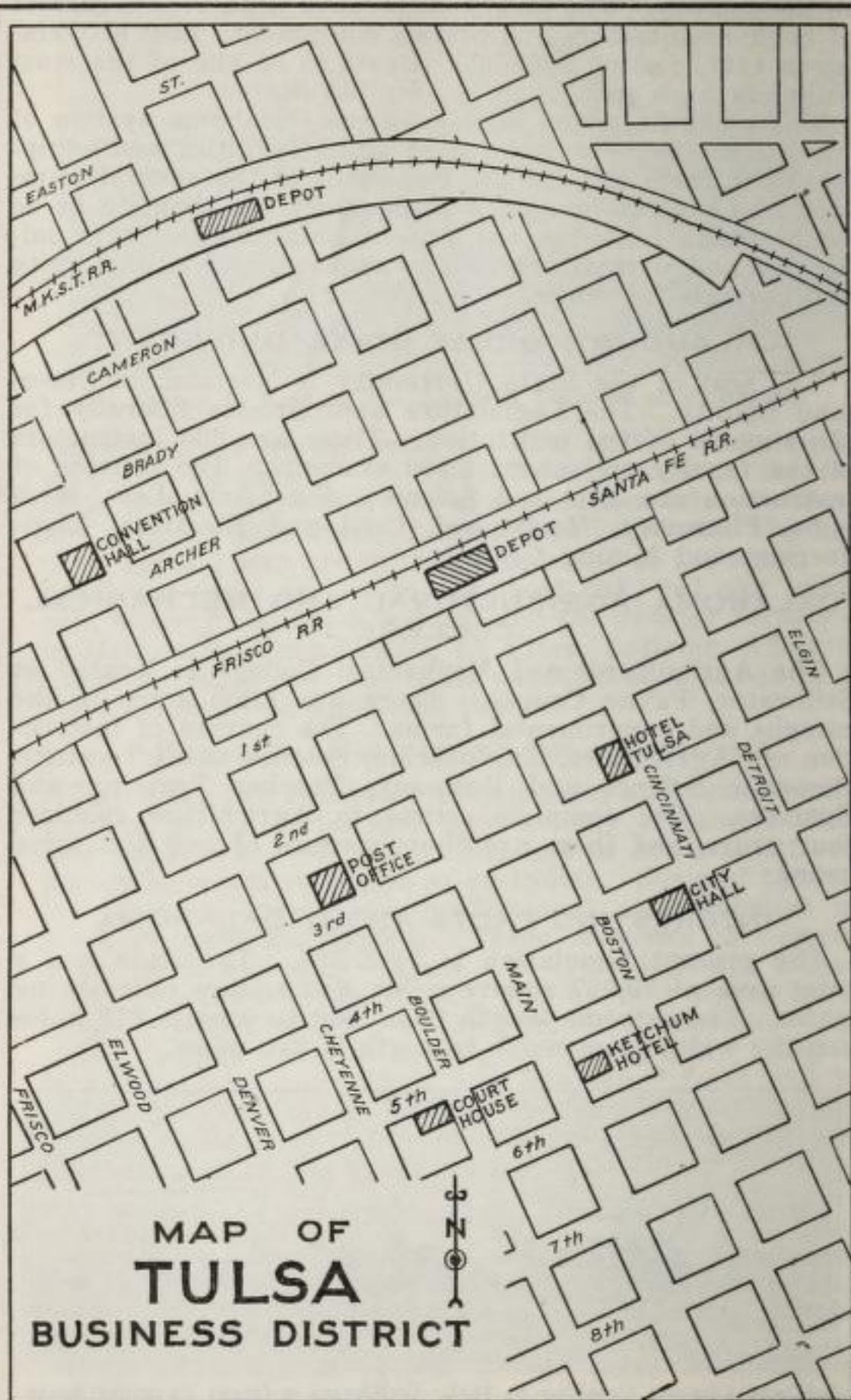
INTERESTING FACTS ABOUT OKLAHOMA

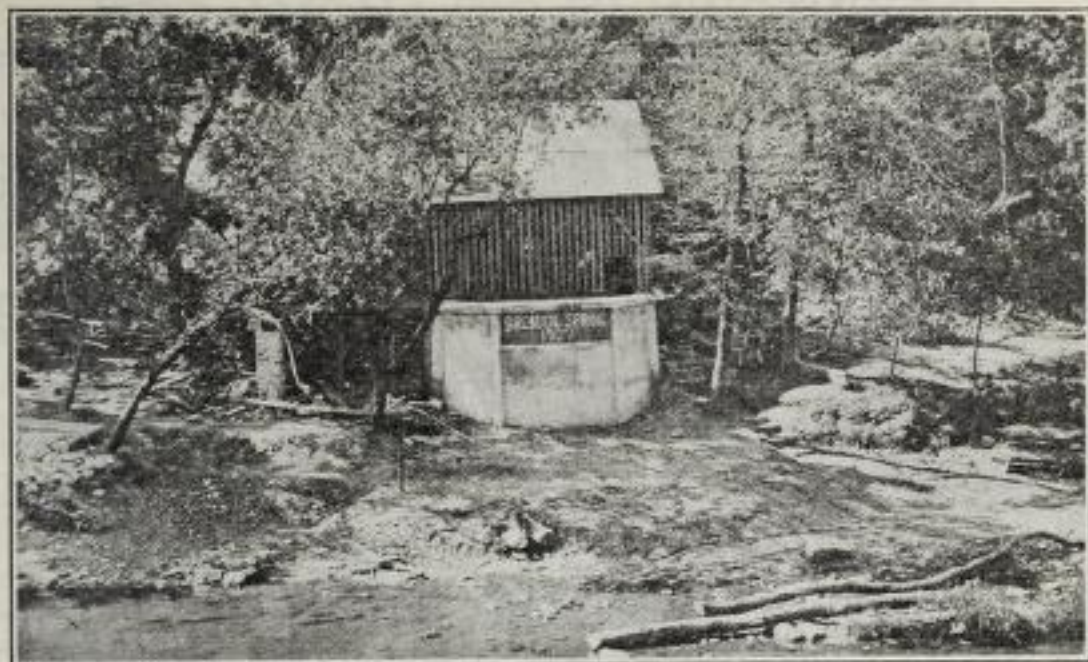
The present population is 2,027,564. The state has a total area of 70,057 square miles, 643 square miles being water. The extreme length from east to west is 479 miles and the width from north to south is 231 miles.



Soil and Climate Combine to Make Oklahoma a Great Farming State

DOWNTOWN IN TULSA





The Bromide Spring, Platt National Park, Cures Insomnia and All Manner of Nervous Troubles

Oklahoma was admitted as a state in 1907, being composed of the two territories of Oklahoma and Indian Territory.

There are no free government lands in Oklahoma.

Most of the state is prairie, being level in the western portion and rolling in the eastern. The southern portion is diversified with several ranges of mountains, which often rise up out of a level plain. The Wichita Mountains rise to an altitude of about 2,250 feet. The altitude of the state is about 400 feet above sea level in the southeastern portion, and rises gradually to about 5,000 feet at the New Mexico border.

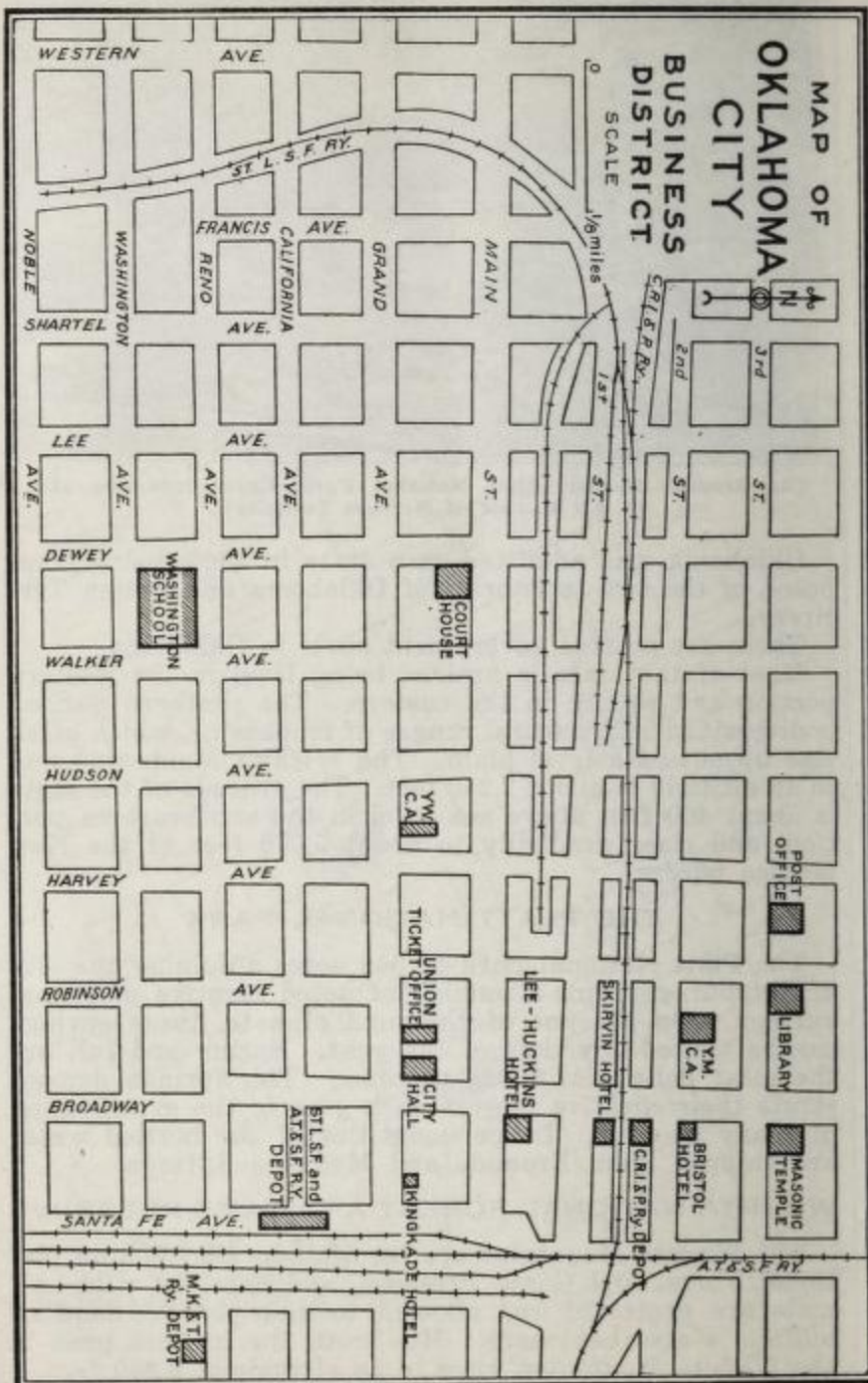
THE PLATT NATIONAL PARK

The Platt National Park of 848 acres adjoining the city of Sulphur, contains a number of noted curative medicinal springs. On account of the mild climate, these springs can be visited any time of the year. Spring and fall are the most delightful times to come. The springs demonstrate their curative powers each year to the gratification of many invalids. Large quantities of the bottled water are shipped from Bromide and Medicine Springs.

WICHITA NATIONAL FOREST AND GAME PRESERVE

The Wichita Mountains are set aside as the Wichita National Forest and Game Preserve, and here the wild animals are protected and allowed to multiply. A herd of buffalo is also kept here. Mt. Scott, the highest peak in the Wichita Mountains, rises to an altitude of 2,250 feet.

DOWNTOWN IN OKLAHOMA CITY



OKLAHOMA CITY, THE METROPOLIS

Oklahoma City, largest in the state, is the capital. Its amazing development has prompted the admiration of the world, and noted writers have vied with each other in pen-portrayals of the spirit of the city. The following simple words by Herbert Quick, tell what Oklahoma City is:

"Oklahoma City is a real city now, with a powerful business life, a great population, and everything that any great city possesses. It is a greater city than was Athens in the Periclean age—greater in everything that makes for better human life. Like Athens, it is a commercial city; but, unlike the glory that was Greece, its greatness is based on a recognition of the principle of democracy—I know what some might say about that, but I mean real democracy. It is only one of a galaxy of cities in Oklahoma, all of them resting at bottom on the farmers of the state."

Oklahoma City today is the industrial, financial, agricultural, educational, political and jobbing center of the state.

TULSA, IN THE CENTER OF THE OIL DISTRICT

Tulsa, second largest city in the state, has had the most remarkable growth of any city in the country in recent years. Situated in the heart of the oil country, Tulsa capitalized upon its opportunities and from a town of 18,000 in 1910 has grown to a city of 72,000 in ten years. Other cities of importance are: Muskogee, Okmulgee, Shawnee, Ardmore, Bartlesville, Chickasha, Enid, Guthrie, McAlester, Lawton and Sapulpa.

OKLAHOMA HAS A WELCOME FOR ALL

Oklahoma offers everything that the seeker of the "end of the rainbow" may desire. No state in the Union has made greater progress, no state has more potential wealth, no state offers greater possibilities and no state extends a heartier welcome to the visitor or the newcomer. Jealous of the welfare of her own, Oklahoma finds in her heart room for the new citizen who will aid her advancement. To the stranger within her gates, the hospitality of a great state is given.

The Oklahoma City Chamber of Commerce will be pleased to handle inquiries from those interested in the state or its beautiful Capital City.

GOOD ROADS FOR THE MOTORIST

In normal seasons the motorist will find very good roads through Oklahoma, especially along the through routes. The soil and climatic conditions are such that good dirt roads can be made and maintained the year round at very little expense or labor. Usually, dragging after the rains soon results in an excellent road. The ground does not freeze deep in the winter, so there is no spring break-up with resulting soft roads.

In the more thickly populated counties the good road feeling runs high and enthusiastic efforts are bearing fruit in fine hard-surfaced roads.

AUTOMOBILE ROAD SECTION ROAD NAMES AND POLE MARKINGS

Name	Pole Marking	Key to Map
Abo Pass or Abo Highway.....	Red arrow on yellow band.....	B-3
Albert Pike Highway.....	AP on red, white and blue.....	C-1
Amarillo Wichita Highway.....	B-2
Atlantic Pacific Highway.....	AP on yellow, black and yellow.....	C-8
Bankhead Highway	BH	B-6
Borderland Route	B-8
Carrie Nation Trail.....	Hatchet	C-1
Choctaw Trail	C. T. or Indian head.....	H-7
Dallas and Oklahoma City.....	G-8
Dallas-Canadian-Denver Highway.....	D-C-D	C-8
Hockaday Trail	Red H.....	B-2
Indian Trail	G-7
Jefferson Highway	JH on blue, white and blue.....	H-5
Kansas City, Fort Scott and Tulsa Short Line.....	Yellow on white.....
King of Trails.....	K over T on gold.....	G-7
Liberal Raton Trail.....	LRT	B-8
Meridian Highway	Red MH on white.....	D-7
Oil Cities Highway.....	E-7
Oklahoma, Kansas & Colorado Highway	OKC, white and black.....	C-2
Oklahoma-Lincoln Highway	G-5
Oklahoma, Texas and Gulf Highway Highway	Black, yellow and black.....	F-5
Ozark Trails	OT, white and green.....	B-5
Postal Highway	PH or Postal Highway.....	A-4
Robertson Highway	R over H.....	H-4
South West Trail.....	S. W.	D-5
Santa Fe Trail.....	S, yellow and black.....
Stapleton Highway	S on white, brown and white.....	E-5
Star Highway	White star in arrow, red, white and blue	C-6
White River Trail.....	WRT in heart.....	J-3
Williams Highway	WH black on white.....	H-7
Wilson Highway	Red and white.....	K-1
Young's Trail	Y. T.

LOG OF AUTO ROUTES

The following tables give the mileage along the principal cross state auto routes. In the first column are the total distances from the initial point. The second column gives the distance from each town to the town above. In the column following the town names will be found the reverse distances from the last town in the list to the first.

Albert Pike Highway and Other Roads—Fort Smith, Ark., to Tulsa and Alva

0	0	FORT SMITH, Ark.	382	182	33	Oilton	206
29	29	Sallisaw, Okla.	353	188	6	Drumright	194
41	12	Vian	341	199	11	Cushing	183
87	46	MUSKOGEE	295	247	48	GUTHRIE	135
126	39	Broken Arrow	256	311	64	ENID	71
142	16	TULSA	240	362	51	Cherokee	20
149	7	Sand Springs	233	382	20	Alva	0

Atlantic Pacific Highway and Borderland Route—Liberal, Kans., to Stratford, Texas

0	0	Liberal, Kans.	101	56	28	Guymon	45
14	14	Tyrone, Okla.	87	81	25	Texhoma, Okla.	20
28	14	Hooker	73	101	20	Stratford, Texas	0

D. C. D. Highway and Other Roads—Gainesville, Texas to Sayre

0	0	Gainesville, Texas	259	125	32	Walters	134
22	22	Marietta, Okla.	237	151	26	Lawton	108
38	16	ARDMORE	221			Wichita Game Preserve	
55	17	Wilson	204	210	59	Hobart	49
66	11	Ringling	193	259	49	Sayre	0
93	27	Waureka	166				

Jefferson Highway and King of Trails—Denison, Texas to Parsons, Kans., and Joplin, Mo.

0	0	DENISON, Texas	311	191	22	Wagoner	120
24	24	Durant, Okla.	287	218	27	Pryor	93
37	13	Caddo	274	249	31	Vinita, Okla.	62
58	21	Atoka	253	311	62	PARSONS, Kans.	0
85	27	Kiowa	226	249	0	Vinita, Okla.	77
102	17	McALESTER	209	281	32	Miami, Okla.	45
132	30	Eufaula	179	307	26	Galena, Kans.	19
146	14	Checotah	165	326	19	JOPLIN, Mo.	0
169	23	MUSKOGEE	142				

McAlester to Fort Smith, Ark.

0	0	McALESTER	114	15	3	Hartshorne	99
3	3	Krebs	111	33	18	Wilburton	81
6	3	Alderson	108	77	44	Poteau, Okla.	37
12	6	Dow	102	114	37	FORT SMITH, Ark.	0

Meridian Highway and South West Trail—Wichita, Kans., to Wichita Falls, Texas

0	0	WICHITA, Kans.	350	226	39	CHICKASHA	124
32	32	Wellington, Kans.	318	245	19	Anadarko	105
82	50	Medford, Okla.	268	265	20	Apache	85
96	14	Pondcreek	254	283	18	Fort Sill	67
119	23	ENID	231	287	4	Lawton, Okla.	63
140	21	Hennessey	210	333	46	Burkburnett, Texas	17
162	22	Kingfisher	188	350	17	WICHITA FALLS	0
187	25	El Reno	163				

Oklahoma City, Okmulgee and Tulsa

0	0	OKLAHOMA CITY.....	169	132	13	Beggs	37
54	54	Prague	115	142	10	Mounds	27
68	14	Boley	101	147	5	Kiefer	22
82	14	Okemah	87	154	7	SAPULPA	15
103	21	Henryetta	66	169	15	TULSA	0
119	16	OKMULGEE	50				

Oklahoma, Texas and Gulf Highway—Arkansas City, Kans., to Denison, Texas

0	0	ARKANSAS CITY,		177	20	Lexington	153
		Kans.	330	179	2	Purcell	151
13	13	Newkirk, Okla.	317	207	28	Pauls Valley	123
27	14	Ponca City	303	216	9	Wynne Wood.....	114
36	9	101 Ranch	294	228	12	Davis	102
67	31	Perry	263	237	9	Sulphur	93
103	36	GUTHRIE	227	272	35	Tishomingo	58
122	19	Edmond	208	307	35	Durant, Okla.	23
137	15	OKLAHOMA CITY.....	193	330	23	DENISON, Texas.....	0
157	20	Norman	173				

Ozark Trails—Joplin, Mo., to Oklahoma City and Amarillo, Texas

0	0	JOPLIN, Mo.....	587	206	20	Stroud	381
8	8	Galena, Kans.....	579	221	15	Chandler	366
25	17	Picher, Okla.....	562	275	54	OKLAHOMA CITY.....	312
27	2	Tar River.....	560	324	49	CHICKASHA	263
31	4	Commerce	556	345	21	Anadarko	242
35	4	Miami	552	400	55	Hobart	187
107	72	Nowata	480	421	21	Granite	166
122	15	Collinsville	465	434	13	Mangum, Okla.....	153
146	24	TULSA	441	479	45	Wellington, Texas.....	108
161	15	SAPULPA	426	587	108	AMARILLO	0
186	25	Bristow	401				

Ozark Trails—Tulsa to Independence, Kansas

0	0	TULSA	107	79	17	Caney, Kans.....	28
23	23	Collinsville	84	107	28	INDEPENDENCE,	
58	35	BARTLESVILLE	49			Kans.	0
62	4	Dewey, Okla.....	45				

Postal Highway and Other Roads—Oklahoma City to Amarillo, Texas

0	0	OKLAHOMA CITY.....	299	135	31	Elk City	164
16	16	Yukon	283	156	21	Sayre	143
29	13	El Reno	270	179	23	Erick, Okla.....	120
56	27	Geary	243	203	24	Shamrock, Texas.....	96
89	33	Weatherford	210	299	96	AMARILLO	0
104	15	Clinton	195				

Star Highway—Wichita Falls, Texas to Ashland, Kansas

0	0	WICHITA FALLS,		153	17	Clinton	163
		Kans.	316	157	4	Arapaho	159
28	28	Grandfield, Okla.....	288	189	32	Taloga	127
58	30	Frederick	258	242	53	Woodward	74
81	23	Snyder	235	283	41	Buffalo, Okla.....	33
113	32	Hobart	203	316	33	Ashland, Kans.....	0
136	23	Cordell	180				

Woodward to Kiowa, Kansas

0	0	Woodward	90	62	25	Alva, Okla.	28
87	37	Waynoka	53	90	28	Kiowa, Kans.	0

Enid to Newkirk

0	0	ENID	81	63	26	Blackwell	18
23	23	Pond Creek	58	81	18	Newkirk	0
37	14	Medford	44				

EDUCATIONAL AND OTHER INSTITUTIONS

Roberts Business College.....	Altus
Bloomfield Academy.....	Ardmore
Y. M. C. A.....	Bartlesville
City Electric Pavilion.....	Blackwell
Okla. Normal School.....	Boley
Hospital	Cherokee
Chickasha Business Col.....	Chickasha
Okla. College (women).....	Chickasha
Christian College.....	Cordell
Okla. Presbyterian Col.....	Durant
Phillips University.....	Enid
Eufaula Boarding School.....	Eufaula
Catholic Academy.....	Guthrie
Municipal Bath House.....	Guthrie
Kingfisher College.....	Kingfisher
Indian School.....	Lawton
St. Mary's Institute.....	Okeene
Okmulgee Business Col.....	Okmulgee
Osage Indian School.....	Pawhuska
Municipal Auditorium.....	Ponca City
Okla. Baptist Uni.....	Shawnee
Okla. Catholic Uni.....	Shawnee
Carnegie Library.....	Tahlequah
Baptist College.....	Tecumseh
Carnegie Library.....	Wagoner

LIST OF COUNTIES

Pop.	County	Area	County Seat	Key	Pop.	County	Area	County Seat	Key
13703	Adair.....	584	Stilwell.....	K-3	42765	Le Flore.....	1614	Poteau.....	K-5
16253	Alfalfa.....	867	Cherokee.....	D-1	33406	Lincoln.....	959	Chandler.....	F-3
20862	Atoka.....	997	Atoka.....	G-6	27550	Logan.....	739	Guthrie.....	E-3
14048	Beaver.....	1813	Beaver.....	D-8	12433	Love.....	496	Marietta.....	E-7
18989	Beckham.....	917	Sayre.....	A-4	12426	Major.....	937	Fairview.....	C-2
15875	Blaine.....	931	Watonga.....	C-3	14674	Marshall.....	419	Madill.....	F-7
40700	Bryan.....	928	Durant.....	G-7	16829	Mayes.....	676	Pryor.....	J-2
34207	Caddo.....	1377	Anadarko.....	C-5	19326	McClain.....	562	Purcell.....	E-5
22288	Canadian.....	891	El Reno.....	D-4	37905	McCurtain.....	1897	Idabel.....	K-7
40247	Carter.....	831	Ardmore.....	E-7	26404	McIntosh.....	661	Eufaula.....	H-4
19872	Cherokee.....	791	Tahlequah.....	J-3	13115	Murray.....	424	Sulphur.....	F-6
32144	Choctaw.....	790	Hugo.....	H-7	61710	Muskogee.....	814	Muskogee.....	J-4
3436	Cimarron.....	1849	Boise City.....	A-8	13560	Noble.....	734	Perry.....	E-2
19389	Cleveland.....	554	Norman.....	E-4	15935	Nowata.....	586	Nowata.....	H-1
18406	Coal.....	525	Coalgate.....	G-6	25051	Okfuskee.....	623	Okemah.....	G-4
26629	Comanche.....	1080	Lawton.....	C-6	116270	Oklahoma.....	717	Oklahoma.....	E-4
16586	Cotton.....	646	Walters.....	C-7	55072	Okmulgee.....	679	Okmulgee.....	H-4
19160	Craig.....	757	Vinita.....	J-1	36536	Osage.....	2277	Pawhuska.....	G-2
62480	Creek.....	962	Sapulpa.....	G-3	41108	Ottawa.....	477	Miami.....	K-1
18736	Custer.....	998	Arapaho.....	B-4	19226	Pawnee.....	584	Pawnee.....	F-2
13868	Delaware.....	794	Jay.....	K-2	30180	Payne.....	678	Stillwater.....	F-3
12434	Dewey.....	989	Taloga.....	B-3	52570	Pittsburg.....	1370	McAlester.....	H-5
11673	Ellis.....	1218	Arnett.....	A-2	30329	Pontotoc.....	728	Ada.....	F-6
337470	Garfield.....	1061	Enid.....	D-2	46028	Pottawatomie.....	793	Tecumseh.....	F-5
32445	Garvin.....	821	Pauls Valley.....	E-6	17514	Pushmataha.....	1430	Antlers.....	J-6
13943	Grady.....	1024	Chickasha.....	D-5	10638	Roger Mills.....	1135	Cheyenne.....	A-4
16072	Grant.....	994	Medford.....	E-1	17605	Rogers.....	730	Claremore.....	H-2
5836	Greer.....	644	Mangun.....	A-5	23662	Seminole.....	633	Wewoka.....	G-5
11267	Harmon.....	548	Hollis.....	A-5	26786	Sequoyah.....	693	Sallisaw.....	K-4
7623	Harper.....	1033	Buffalo.....	A-1	24692	Stevens.....	897	Duncan.....	D-6
19397	Haskell.....	615	Stigler.....	J-5	14020	Texas.....	2065	Guymon.....	B-8
26045	Hughes.....	855	Holdenville.....	G-5	22433	Tillman.....	733	Frederick.....	B-6
22117	Jackson.....	778	Altus.....	B-6	109023	Tulsa.....	565	Tulsa.....	H-3
17684	Jefferson.....	767	Waurika.....	D-7	21371	Wagoner.....	545	Wagoner.....	J-3
20125	Johnston.....	658	Tishomingo.....	G-7	27002	Washington.....	425	Bartlesville.....	H-1
35907	Kay.....	934	Newkirk.....	E-1	22237	Washita.....	1006	Cordell.....	B-4
15671	Kingfisher.....	890	Kingfisher.....	D-3	15939	Woods.....	1255	Alva.....	C-1
23094	Kiowa.....	1179	Hobart.....	B-5	14663	Woodward.....	1233	Woodward.....	B-2
13866	Latimer.....	735	Wilburton.....	J-5					

MOUNTAINS

Name	Key	Name	Key	Name	Key
Arbuckle Mts.....	F-6	Pine Mts.	K-7	Tucker Knob	J-5
Black Fork Mt.....	K-6	Quentin Pk.	K-6	Wichita Mts.	C-6
Blue Mt.	J-5	Rich Mt.	K-6	Williams Mts.	K-7
Buffalo Mt.	J-6	Sansbois Mt.	J-5	Wilton Mt.	K-6
Cavanal Mt.	K-5	Scott Mt.	C-6	Winding Stair Mt.....	J-5
Kaimichi Mts.	K-6	Self Mt.	K-6		
Pine Mt.	K-6	Table Hills	E-6		

STATE INSTITUTIONS

Name	Location	Name	Location
E. Central State Normal.....	Ada	Pauls Valley
N. W. State Normal.....	Alva	Orphans Home & Deaf & Blind
Okla. Confederate Home.....	Ardmore	Pauls Valley
Okla. College for Women.....	Chickasha	The State Home (Orphanage)
S. E. State Normal.....	Durant	Pryor
Central State Normal.....	Edmond	Agri. & Mech. College.....	Stillwater
Institute for Feeble Minded.....	Enid	School for the Deaf.....	Sulphur
Panhandle School of Agri.....	Goodwell	Okla. Hospital for Insane.....	Supply
Okla. State Reformatory.....	Granite	Institute for Negroes.....	Taft
A. & N. Uni. for Negroes.....	Langston	N. E. State Normal.....	Tahlequah
Cameron State School of		Murray State School of Agricul-	
Agriculture	Lawton	ture	Tishomingo
Okla. State Penitentiary.....	McAlester	E. Okla. Hospital for Insane
School for the Blind.....	Muskogee	Vinita
Central Okla. St. Hospital.....	Norman	Connor State School of Agricul-	
State University.....	Norman	ture	Warner
Russell Ind. School (for Girls)		S. W. State Normal.....	Weatherford
.....	Oklahoma City	State School of Mines.....	Wilburton
State Training School for Boys			

RAILROADS

Railroads	Location	Railroads	Location
Arkansas Western	K-5	Oklahoma, New Mexico & Pac.....	E-7
Atchison, Topeka & Santa Fe.....	F-2	Oklahoma Ry.	E-4
Beaver, Meade and Englewood.....	D-8	Interurban radiating from Okla-	
Buffalo Northwestern	B-1	homa City to Guthrie, Norman	
Waynoka to Edith.		and El Reno.	
Chicago, Rock Island & Gulf.....	B-8	Oklahoma S. W. Ry.....	(Building)
Chicago, Rock Island & Pacific.....	D-7	Okmulgee Northern	H-4
Clinton & Oklahoma Western.....	B-4	Pittsburg County Ry.....	H-5
Fort Smith & Western.....	H-5	Electric line McAlester to Harts-	
Fort Smith, Poteau & Western.....	K-5	horne.	
Frisco Lines	J-6	Poteau Valley	K-5
Gulf, Colorado & Santa Fe.....	F-7	Ringling, Eastland & Gulf.....	B-5
Kansas City, Mexico & Orient.....	B-5	Freight line Mangum to Wayland.	
Kansas City Southern.....	K-4	Sand Springs	H-3
Miami Mineral Belt.....	K-1	Steam and electric.	
Midland Valley	G-1	Sapulpa & Oil Field.....	G-3
Missouri, Kansas & Texas.....	J-2	Shawnee-Tecumseh Traction	F-4
Missouri, Oklahoma & Gulf.....	J-3	Interurban Shawnee to Tecumseh.	
Missouri Pacific	H-2	St. Louis, El Reno & Western.....	E-4
Muskogee Electric Tr. Co.....	J-4	St. Louis, Iron Mountain &	
Traction line in vicinity of Mus-		Southern	H-2
kogee.		Missouri Pacific System.	
Northeast Oklahoma (Okla. Kans. &		St. Louis-San Francisco.....	J-6
Mo. Ry.)	J-1	Texas, Oklahoma & Eastern.....	J-7
Interurban Miami to Century.		Union Traction (Electric).....	H-1
Oil Fields Short Line.....	F-1	Nowata to Coffeyville, Kans.	
Oklahoma City Junction Ry.....	E-4	Wichita Falls & Northwestern.....	B-6
A terminal railroad in Oklahoma		M. K. & T. Ry. System.	
City.			

CLASON'S COMMERCIAL INDEX OF OKLAHOMA CITIES AND TOWNS

EXPLANATION

POPULATION—In the column at the left of the name of the town, under the abbreviation "pop." are figures to denote the population.

COUNTIES—Following the name of the town is the name of the county in which it is located.

ELEVATIONS—Below the abbreviation "Alt." are figures indicating the altitude of the town above sea level.

KEY—The letter and figures in the right hand column under the word "Key" refer respectively to the letters on the top and bottom of the accompanying map, and the figures on each side of it; thus indicating the location of the town on the map.

RESOURCES—A brief description gives the industries and resources of the more important towns.

HOTELS—Under the larger towns are given the name of one or more hotels.

Pop.	Co.	Alt.	Key	Pop.	Co.	Alt.	Key
15	Abbie, Woods		B-1		Pontotoc	850	G-5
	Abbott, Pontotoc				Farming and oil production.		
500	Achille, Bryan		G-7		Cotton raised. M. O. & G.		
50	Acme, Grady		D-5		Ry. round house.		
8012	ADA,				Donaghey Hotel.		
	Pontotoc	994	F-5	25	Allison, Bryan		G-7
	County seat. Farming and			300	Alluwe, Nowata	650	H-2
	stock raising. Oil.			75	Alma, Stephens	1050	E-6
	Harris Hotel.				Alpers, Carter		
369	Adair, Mayes	683	J-2	100	Alsuma, Tulsa		H-3
225	Adamson,				Altona, Kingfisher		
	Pittsburg	650	H-5	4498	ALTUS,		
	Addielee, Adair		K-3		Jackson	1388	B-6
368	Addington,				County seat. Farming and		
	Jefferson	918	D-7		stock raising. Railroad di-		
	Adel, Pushmataha		H-6		vision point and shops.		
15	Adelaide, Cotton		C-7		Mills.		
1518	Afton,				Orient Hotel. Commercial		
	Ottawa	785	J-1		Hotel. Kirby Hotel.		
	Farming. Frisco Ry. divi-			3912	ALVA, Woods	1320	C-1
	sion point. Mining.				County seat. Farming and		
	Dawson Hotel. Palmer Ho-				stock raising. Oil fields in		
	tel.				the vicinity.		
272	Agra, Lincoln	1036	F-3		Gunn Hotel.		
	Ahloso,			250	Amber, Grady	1254	D-5
	Pontotoc	820	G-6	50	America, McCurtain		K-8
100	Akins,			278	Ames, Major	1197	D-2
	Sequoyah	650	K-4	196	Amorita,		
	Alamo, Texas				Alfalfa	1209	D-1
	Alabama, Okfuskee		G-4	3116	ANADARKO,		
25	Albany, Bryan		G-7		Caddo	1164	D-5
125	Albert, Caddo		C-5		County seat. Farming, live		
301	Albion,				stock and oil.		
	Pushmataha	658	J-6		Hotels: Bryan and Avenue.		
40	Alden, Caddo		C-5	25	Anderson, Pittsburg		H-5
855	Alderson,			10	Anthon, Custer		B-3
	Pittsburg	683	H-5	75	Antioch, Garvin	1000	E-6
25	Aledo, Dewey		B-3	1842	ANTLERS,		
478	Alex, Grady	1035	E-5		Pushmataha	499	H-7
100	Alfalfa, Caddo		C-5		County seat. Farming and		
	Alikchi, McCurtain		J-7		stock raising. Lumbering.		
358	Aline, Alfalfa	1281	C-2		Harvey House. Hotel Ellis.		
1377	Allen,			919	Apache, Caddo	1235	D-5

Pop.	Co.	Alt.	Key	Pop.	Co.	Alt.	Key
			Farming and stock raising.				(Morris 8 mi.).....
	Warner Hotel.		Blackwell	100	Balko, Beaver		C-8
	Hotel.			100	Banner, Canadian	1300	D-4
	Apple, Choctaw				Banner, Garvin		
50	Ara, Stephens		E-6	30	Banty, Bryan		H-7
326	ARAPAHO,			10	Barber, Cherokee		K-3
	Custer	1534	C-4	10	Barnes, Major		C-2
	County seat.	Farming.		25	Barney, Major		C-2
	Doemen Hotel.			50	Baron (Barron),		
15	Arbuckle, Murray		F-6		Adair	902	K-3
300	Arcadia,			14417	BARTLESVILLE,		
	Oklahoma	959	E-4		Washington	695	H-1
25	Arch, Pittsburg		H-6		County seat.	Farming and	
14181	ARDMORE,				stock raising.	Oil, gas and	
	Carter	868	F-7		gasoline production.	Supply	
	County seat.	Farming and			point for Mid-Continent	Oil field.	
	stock raising.	Manufacturing.			Fine Y. M. C. A. building.	Hotel Maire.	
	ing. Center for operations	of Healdton Oil Field			producing 60,000 barrels daily.	Whittington	
	Ardmore Hotel.	Hotel.					
10	Arkoma, Le Flore		K-4		Bartlett, McIntosh		H-4
30	Arlington, Lincoln		F-4	25	Barton, Washita		
15	Armstrong,				Baum, Carter		F-7
	Bryan	567	G-7	25	Beachton, McCurtain		
404	ARNETT, Ellis		A-3	25	Bear, Hughes		G-5
	County seat.	Farming and		90	Bearden,		
	stock raising.	Manufacturing.			Okfuskee	900	G-4
	Scotts Hotel.			920	BEAVER, Beaver		D-8
	Arnettville, Noble		F-2		County seat.	Farming and	
25	Arpelar, Pittsburg		H-5		stock raising.	White House.	Ozark Hotel.
	Arta, Kay			75	Bebee,		
50	Arthur,				Pontotoc	1000	F-5
	Stephens	1050	E-6	25	Bee, Johnston	600	G-7
	Artie, McCurtain			2327	Beggs,		
370	Asher,				Okmulgee	708	G-3
	Pottawatomie	955	F-5		Farming and stock raising.	Cotton gins.	
125	Ashland,				Ethel Hotel.		
	Pittsburg	750	H-5	50	Beland,		
15	Ashley, Alfalfa		C-1		Muskogee	600	H-4
25	Asphaltum, Jefferson		E-7	10	Belford, Osage		F-2
30	Atlee, Jefferson		E-7	100	Bellefont,		
2038	ATOKA, Atoka	560	G-6		Pottawatomie	1046	F-4
	County seat.	Farming and			Belleville, Jefferson		
	stock raising.	Round house and repair			Belmina, Sequoyah		
	shops of Katy Ry.	Hotels: Bates, Jefferson.		25	Belva, Woodward	1518	B-2
				15	Belzoni, Pushmataha		J-7
200	Atwood, Hughes	800	G-5	50	Bengal, Latimer	646	J-5
100	Autwine, Kay		F-1	951	Bennington,		
1071	Avant, Osage	682	G-2		Bryan	610	H-7
147	Avard, Woods	1473	C-1		Farming.		
200	Avery, Lincoln	904	F-3	75	Bentley, Atoka	500	H-2
10	Aydelotte,			40	Berlin, Roger Mills		A-4
	Pottawatomie	968	F-4	198	Bernice,		
200	Aylesworth,				Delaware	750	J-2
	Marshall	611	G-7	435	Berwyn, Carter	727	F-7
75	Bache,			363	Bessie, Washita	1529	B-4
	Pittsburg	700	H-5	485	Bethany, Oklahoma		E-4
	Bacone, Muskogee		J-3	50	Bethel, McCurtain	750	K-6
100	Bailey, Grady	1150	D-6		Bettina, Beckham		
25	Baird, Cotton		D-6	10	Beulah, Rogers		H-2
90	Baldhill, Okmulgee,			25	Bickford, Blaine		C-3
				25	Bidding Springs, Adair		K-3

Pop.	Co.	Alt.	Key	Pop.	Co.	Alt.	Key
500	Big Cabin, Craig	720	J-2	1204	Boynton, Muskogee	624	H-4
25	Bigcedar, Le Flore		K-6		Farming and stock raising. Oil production.		
2099	Bigheart, Osage	750	G-2		Boynton Hotel.		
15	Bilby, Hughes		G-5	75	Braden, Le Flore	427	K-4
846	Billings, Noble	1173	E-2	200	Bradley, Grady	1015	E-5
482	Binger, Caddo	1261	D-4	30	Brady, Garvin		E-6
	Bird, Major			430	Braggs, Muskogee	558	J-4
	Bishop, Ellis		A-3	50	Braithwaite, Washita	1579	B-4
200	Bison, Garfield	1241	D-2	396	Braman, Kay		E-1
1249	Bixby, Tulsa		H-3	15	Bray, Stephens		D-6
	Farming. Palace Hotel.			132	Breckenridge, Garfield	1196	E-2
257	Blackburn, Pawnee		G-2	25	Brent, Sequoyah		K-4
40	Blackgum, Sequoyah	850	J-4	75	Briartown, Muskogee	550	J-4
10	Blackland, Osage		G-1	294	Bridgeport, Caddo	1424	C-4
	Blackrock, Pontotoc			239	Brinkman, Greer		B-5
7174	Blackwell, Kay	1014	E-1	3460	Bristow, Creek	817	G-3
	Farming, fruit and stock raising. Oil and gas fields. Denton Hotel.				Farming and live stock. Oil mills and refinery and glass plants. Laurel Hotel.		
50	Blaine, Haskell	450	K-4	1070	Britton, Oklahoma	1213	E-4
437	Blair, Jackson	1457	B-5	75	Brock, Carter	900	E-7
50	Blake, Greer		A-5	2086	Broken Arrow, Tulsa	740	H-3
842	Blanchard, McClain		E-5		Farming and oil production. Coal mining. Vena Hotel. St. Charles Hotel.		
125	Blanco, Pittsburg	850	H-6	1983	Broken Bow, McCurtain		K-7
15	Bland, Creek (near Olive)		G-3		Farming and lumbering. W. Siddens, Hotel.		
250	Bliss, Noble	988	F-2	523	Bromide, Johnson	700	G-6
125	Blocker, Pittsburg		H-5	100	Brooken, Haskell	550	J-4
	Bloomington, Greer			100	Brooksville, Pottawatomie	850	F-5
100	Blue, Bryan	602	G-7	25	Brown, Bryan		G-7
442	Blue Jacket (Bluejacket), Craig	776	J-1	15	Bruno, Atoka		H-6
25	Bluff, Choctaw		H-7	15	Brush Hill, McIntosh		H-4
10	Bly, Nowata		H-1	75	Bryant, Okmulgee	716	H-4
10	Boehler, Atoka		H-7	400	Buck, Pittsburg	611	H-5
50	Boggy Depot, Atoka	550	G-7	479	BUFFALO, Harper		A-1
200	BOISE CITY, Cimarron		A-8		County seat. Farming and stock raising. Hotels: Harper, Central.		
	County seat. Farming. Boise City Hotel.			75	Bunch, Adair	772	K-4
627	Bokchito, Bryan	626	G-7	150	Burbank, Osage	928	F-1
100	Bokhoma, McCurtain	427	K-7	169	Burlington, Alfalfa		C-1
869	Bokoshe, Le Flore	559	K-5	125	Burneyville, Love	750	E-7
	Coal mining. Boktuklo, McCurtain		K-7		Burrow, Coal		G-6
154	Boley, Okfuskee		G-4	150	Bushyhead, Rogers	769	H-2
	Farming. Berry Hotel. Haynes Hotel.			332	Butler, Custer		B-4
50	Bomar, Love	823	F-7	60	Butner, Seminole		G-4
10	Boss, McCurtain		K-8				
1212	Boswell, Choctaw	602	H-7				
	Cotton raised.						
75	Bowden, Creek	776	G-3				
25	Bower, Pittsburg		H-5				
10	Bowles, Love		F-7				
20	Box, Sequoyah		J-4				
15	Boyd, Beaver		C-8				

Pop.	Co.	Alt.	Key	Pop.	Co.	Alt.	Key
629	Byars, McClain	1011	F-5	1098	Cement, Caddo	1454	D-5
	Byng, Pontotoc		G-5	250	Center,		
249	Byron, Alfalfa	1184	D-1		Pontotoc	1000	F-5
50	Cabaniss, Pittsburg		H-5	40	Centerville, Kiowa		
382	Cache,				(Mt. Park 11 mi.)		C-6
	Comanche	1275	C-6	250	Centrahoma, Coal		G-6
1421	Caddo, Bryan	710	G-7	300	Centralia, Craig	850	J-1
	Ships cotton, live stock,				Century, Ottawa		K-1
	corn and hay. Oil mill.				Ceres, Noble		
20	Cade, Bryan		H-7	100	Cestos, Dewey		B-3
	Cainville, Blaine			25	Chance, Adair		K-3
50	Cairo, Coal	650	G-6	2226	CHANDLER,		
575	Calera, Bryan		G-7		Lincoln	870	F-3
300	Calhoun, Le Flore		K-5		County seat. Farming and		
350	Calumet,				stock raising. Cotton and		
	Canadian	1370	D-4		oil.		
700	Calvin, Hughes	715	G-5		Hotels: Egbert, Chandler.		
	Cambria, Pittsburg			25	Chaney, Ellis		A-2
10	Cambridge, Kiowa		B-5	279	Chant, Haskell		J-5
203	Cameron,			25	Chapel, Mayes		J-2
	Le Flore	490	K-5	50	Charleston, Harper		B-1
15	Camp, Texas		B-8	507	Chattanooga, Comanche		C-6
	Campbell, Sequoyah			2390	Checotah,		
373	Canadian,				McIntosh	636	J-4
	Pittsburg	662	H-5		Farming and stock raising.		
432	Caney, Atoka	534	G-7		Gentry Hotel.		
582	Canton, Blaine	1610	C-3	30	Cheek, Carter	800	E-7
350	Canute,			1692	Chelsea, Rogers	717	J-2
	Washita	1930	B-4		Farming. Many oil wells.		
	Capitol Hill, Oklahoma		E-4		Cher Creek, Wagoner		J-3
184	Capron, Woods	1290	C-1	2017	CHEROKEE,		
400	Carbon, Pittsburg	649	H-5		Alfalfa	1175	D-1
2640	Cardin (Tar River),				County seat. Farming and		
	Ottawa		K-1		stock raising.		
25	Carl, Harmon		A-5		Hotels: Henderson, Orient.		
25	Carlton (Carleton),			10	Chester, Major		C-2
	Blaine	1576	C-3	10	Cheyew, Adair		K-3
792	Carmen, Alfalfa	1333	C-2	10	Cheyarha, Seminole		G-4
1150	Carnegie,			400	CHEYENNE,		
	Caddo	1284	C-5		Roger Mills		A-4
	Farming.				County seat. Farming and		
367	Carney, Lincoln	1066	F-3		stock raising. Oil wells.		
40	Carpenter, Roger		B-4		Kemp Hotel.		
225	Carrier,			10179	CHICKASHA,		
	Garfield	1354	D-2		Grady	1091	D-5
20	Carroll, McIntosh		H-4		County seat. Farming and		
15	Carson, Hughes		H-5		stock raising. Oil and gas		
389	Carter, Beckham		B-4		wells. C. R. I. & P. Ry.		
40	Cartersville,				shops and division point.		
	Haskell	550	K-4		Hotels: McFarland, Early		
10	Carwell, Alfalfa (Ring-				Chickasha.		
	wood 9 mi.)		D-2	25	Chigley, Murray		F-6
25	Casey, Pawnee	937	G-2	25	Childers, Nowata		H-1
295	Cashion,				Chilocco, Kay		F-1
	Kingfisher	1117	E-3	25	Chism, McClain		F-5
381	Castle,			60	Chockie, Atoka	723	H-6
	Okfuskee	900	G-4	199	Choctaw,		
75	Catale, Rogers	753	J-2		Oklahoma	1107	E-4
25	Catesby, Ellis		A-2	541	Choteau, Mayes	627	J-2
30	Cathay (Wells),			40	Christie, Adair	821	K-3
	McIntosh	572	H-4		Chronister, Cherokee		
404	Catoosa, Rogers	617	H-3	10	Church, Adair		K-3
25	Cedardale, Woodward		B-2	25	Citra, Hughes		G-5
25	Celestine, Pittsburg		H-5	50	Civet (Civit), Garvin		F-5

Pop.	Co.	Alt.	Key	Pop.	Co.	Alt.	Key
8435	CLAREMORE,						
	Rogers	606	H-2		Center of lead and zinc mining district.		
	County seat. Farming. Oil and gas produced.				Hotels: Alexander, Ruth & Marquette.		
	Hotels: Mason, Sequoyah.				Concho, Canadian		D-4
5	Clarion, Major		C-2	100	Connerville,		
232	Clarita, Coal		G-6		Johnston	950	G-6
250	Clarksville,			30	Conser, Le Flore		K-5
	Wagoner	600	H-3	60	Coody's Bluff,		
30	Claypool, Jefferson		E-7		Nowata	650	H-1
200	Clayton,			25	Cookson, Cherokee		J-3
	Pushmataha	600	J-6	105	Cooperton, Kiowa		C-5
40	Clear Lake, Beaver		D-8	430	Copan,		
125	Clearview,				Washington	800	H-1
	Okfuskee	750	G-4	50	Corbett, Cleveland		F-5
	Cleo, Major			1855	CORDELL,		
25	Cleora, Delaware		J-2		Washita	1532	B-4
377	Cleo Springs,				County seat. Farming and stock raising.		
	Major	1238	C-2		New Iron Hotel.		
2717	Cleveland,			35	Corinne,		
	Pawnee	740	G-2		Pushmataha	550	J-7
	Farming, stock raising and oil production. Gasoline refineries.			100	Corn (Korn), Washita		C-4
	Arlington Hotel.			261	Cornish, Jefferson	850	E-7
	Cliff, Marshall		F-7		Cornville, Grady		D-5
2596	Clinton, Custer	1517	B-4	25	Corum, Stephens,		
	Farming. Oil mill.				(Comanche 8 mi.)		D-6
	Coleman Hotel. Mrs. Edwards, Hotel.				Cottonwood, Coal		
	Clonsilla (Drumb),			25	Council, Oklahoma		E-4
	Latimer		J-5	206	Council Hill,		
150	Cloud Chief, Washita		C-4		Muskogee	650	H-4
	Cloudy, Pushmataha		J-7	50	Courtney,		
100	Clyde, Grant	1113	D-1		Jefferson	800	E-7
3009	COALGATE,			1283	Covington,		
	Coal	615	G-6		Garfield	1138	E-2
	County seat. Many coal mines. Cattle raising and farming.			25	Cowden, Washita,		
	Hotels: Plaza, Mayer.				(Colony 4 mi.)		C-4
225	Coalton, Okmulgee		H-4	1318	Coweta,		
15	Cobb, Okmulgee		H-3		Wagoner	659	H-3
25	Cogar, Caddo		D-4		Farming and stock raising.		
400	Colbert, Bryan	661	G-7		Hotels: Coweta, Commercial.		
100	Cold Springs,			344	Cowlington,		
	Kiowa	1411	B-5		Le Flore	500	K-4
30	Cole, McClain		E-5	10	Coy, Woods		B-1
225	Coleman,			408	Coyle, Logan	866	F-3
	Johnston	700	G-7	125	Craig,		
3801	Collinsville,				Pittsburg	750	H-5
	Tulsa	633	H-2	15	Cravens, Latimer		J-5
	Oil and farming. Headquarters for oil companies.			100	Crawford, Roger Mills		A-3
	Erwin Hotel.			25	Crekola, Muskogee		J-3
225	Colony, Washita		C-4	878	Crescent, Logan	1120	E-3
25	Columbia, Kingfisher		E-3		Farming, fruit and stock raising.		
1427	Comanche,				Commercial Hotel.		
	Stephens	980	D-6	25	Creta, Jackson		A-6
	Farming district producing cotton, grain and cattle.			25	Criner, McClain	1000	E-5
	Mining.			372	Cross, Kay (Ponca City 1 mi.)		F-4
	Commercial Hotel.			581	Crowder,		
2555	Commerce, Ottawa		J-1		Pittsburg	589	H-5
				10	Crowson, Creek		G-3
				50	Cruce, Stephens		E-6
				25	Crum Creek,		
					Pushmataha		J-6

Pop.	Co.	Alt.	Key	Pop.	Co.	Alt.	Key
25	Crystal, Atoka		H-7	25	Doby Springs, Harper		A-1
200	Cumberland, Marshall	750	G-7	30	Dodge, Delaware	866	K-2
125	Curtis, Woodward	1949	B-2	50	Dolberg, Pontotoc		F-6
25	Curty, McClain		E-5	50	Dombey, Beaver		C-8
6326	Cushing, Payne	931	F-3		Donovan, Hughes		G-5
	Farming and oil production. 15 oil refineries. Cotton production. Thompson Hotel. Commer- cial Hotel.			505	Dougherty, Murray	773	F-6
671	Custer (Custer City), Custer	1800	C-4	195	Douglas (Douglass), Garfield		E-2
386	Cyril, Caddo	1360	D-5	1000	Douthat (Century), Ottawa		K-1
265	Dacoma, Woods	1353	C-1		F. B. Highley, Hotel.		
125	Daisy, Atoka	750	H-6	350	Dover, Knigfisher	1034	D-3
150	Dale, Pottawatomie	1136	F-4	1000	Dow, Pittsburg	700	H-5
10	Damon, Latimer		J-5		Coal mines.		
25	Dane, Major (Fairview 11 mi.)		C-2	75	Doxey, Beckham	1835	A-4
100	Darrow, Blaine	1270	C-3	100	Doyle, Stephens	1100	E-6
25	Darwin, Pushmataha	600	H-7	25	Drake, Murray		F-6
440	Davenport, Lincoln	852	F-4	125	Driftwood, Alfalfa	1190	C-1
461	Davidson, Tillman	1165	B-7		Dropright, Creek		
1609	Davis, Murray	844	F-6	292	Drummond, Garfield	1213	D-2
	Farming, fruit, stock raising and mining. Norwood Hotel.			6460	Drumright, Creek		G-3
200	Dawson, Tulsa	661	H-3		Oil district. Roberts Hotel.		
218	Deer Creek, Grant	1087	E-1		Dryden, Harmon		A-6
20	Deese, Carter		F-7	475	Duke, Jackson		A-6
804	Delaware, Nowata	700	H-1		Duland, Choctaw		
	Delfin, Cimarron		A-8		Dunbar, McIntosh		
75	Delhi, Beckham		A-5		Dunbar, Pushmataha		H-6
15	Dempsey, Roger Mills		A-4	3463	DUNCAN, Stephens	1125	D-6
10	Dennis, Delaware		K-2		County seat. Farming, stock raising, oil and gas wells. Wade Hotel.		
15	Denver, Cleveland		E-5	30	Dunlap, Harper		A-2
800	Depew, Creek	814	G-3	7340	DURANT, Bryan	645	G-7
400	Devol, Cotton		C-7		County seat. Rich agricul- tural district. Normal school and girls college. Atwood Hotel.		
1558	Dewar, Okmulgee		H-4	100	Durham, Roger Mills		A-3
	Coal mines.			50	Durwood, Marshall	856	F-7
2302	Dewey, Washington	688	H-1	713	Dustin, Hughes		H-4
	Important oil district. Some manufacturing. Mrs. Bailey, Hotel.				Eagle Chief, Woods		
10	Diamond, Stephens (near Comanche)		D-6	200	Eagle City, Blaine	1699	C-3
50	Dibble, McClain	1250	E-5	40	Eagletown, McCurtain		K-7
25	Dickson, Oklahoma		E-4	100	Eakly, Caddo		C-4
75	Dighton, Okmulgee		H-4	317	Earlsboro, Pottawatomie	1026	F-4
345	Dill (Dill City), Washita	1847	B-4	502	East Duke, Jackson		
	Dillon, Blaine				East Enid, Garfield		D-2
395	Dilworth, Kay		F-1		East Muskogee, Muskogee (see Muskogee)		J-3
	Dix, Pawnee			15	Eaton, Nowata		H-1
75	Dixie, Stephens	950	E-7	25	Econtuchka, Pottawatomie		F-4

Pop.	Co.	Alt.	Key	Pop.	Co.	Alt.	Key
50	Eddy, Kay	1052	E-1		Etta, Cherokee		
2452	Edmond, Oklahoma	1191	E-4	75	Eubanks, Pushmataha	510	H-6
	Farming and stock raising. Hotel Central.			50	Eucha, Delaware	750	K-2
15	Edna, Creek		G-4	2286	EUFAULA, McIntosh	610	H-4
	Ego, Johnston				County seat. Farming and stock raising.		
60	Eldon, Cherokee		K-3		Hotels: Sellers, Tully.		
967	Eldorado, Jackson	1458	A-6	15	Eureka, Cherokee		J-3
	Farming. New Commercial Hotel.			15	Eva, Texas		B-8
181	Elgin, Comanche	1393	D-5		Exendine, Caddo		
10	Eli, Cherokee		J-3	25	Fair, Stephens (Comanche 9 mi.)		D-6
10	Elise, Pontotoc		F-5	20	Fairbanks, Major		C-2
	Elk, Carter			1343	Fairfax, Osage	834	F-2
2814	Elk City, Beckham	1912	B-4		Farming.		
	Farming. Oil mill. Hotel Story. W. C. Black, Hotel.			818	Fairland, Ottawa	837	K-1
10	Elkton, Alfalfa		D-1	166	Fairmont, Garfield	1199	E-2
15	Elliot, Nowata		H-1	5	Fairvalley, Woods		B-1
	Ellis, Lincoln			1751	FAIRVIEW, Major	1292	C-2
	Elm, Custer		B-3		County seat. Farming and stock raising. Orient R. R. division point.		
300	Elmer, Garvin	950	E-6		Hotels: Floyd, Stilwell.		
337	Elmore City, Jackson	1307	B-6		Falfa, Latimer		
	Elmwood, Beaver		D-8	238	Fallis, Lincoln	882	F-3
7737	EL RENO, Canadian	1363	D-4	10	Fallon, Choctaw		J-7
	County seat. Farming and stock raising. Railroad center and division point with railroad shops. Some manufacturing.			75	Fame, McIntosh	550	H-4
	Hotels: Southern, Anstine.			150	Fanshawe, Le Flore	544	K-5
25	Emanuel, Blaine (Greenfield 7 mi.)		C-3	289	Fargo, Ellis		A-2
10	Emerson, Cotton		C-6	50	Farris, Atoka	500	H-7
50	Emet, Johnston		G-7	15	Farry, Woods		B-1
16576	ENID, Garfield	1244	D-2		Faulkner, Woods		
	County seat. Farming and stock raising. Oil produc- tion, jobbing. Manufactur- ing.			15	Fawn, McIntosh		J-4
	Hotels: Oxford, Sanderson.			263	Faxon, Comanche		C-6
15	Enos, Marshall		F-7	200	Fay, Dewey	1647	C-3
150	Enterprise, Haskell	700	J-5	100	Featherston, Pittsburg	700	J-5
25	Enville, Love		F-7	50	Ferguson, Blaine	1200	D-3
25	Eola, Garvin		E-6	25	Fern, Harper		B-1
75	Eram, Okmulgee	700	H-4		Fewell, Pushmataha		J-6
971	Erick, Beckham	2055	A-5	75	Fillmore, Johnston		G-7
75	Erin Springs, Garvin	1000	E-5	75	Finley, Pushmataha		J-6
25	Ervin, Choctaw		J-7	50	Fisher, Tulsa		G-3
	Estelle, Major				Fitzgerald, Woodward		
15	Estella, Craig		J-1	175	Fitzhugh, Pontotoc	1213	F-6
25	Ethel, Pushmataha		H-7	30	Fleetwood, Jefferson		D-7
50	Etowah, Cleveland	1000	F-5	482	Fletcher, Comanche	1381	D-5
				15	Flint, Delaware		K-2
				15	Florence, Grant		D-1
				25	Floris, Beaver		C-8
					Flushe, Muskogee		H-4
					Fob. Marshall		
				20	Fogel, Le Flore		K-6
				20	Folsom, Johnson		G-7

Pop.	Co.	Alt.	Key	Pop.	Co.	Alt.	Key
25	Fonda, Dewey		C-3	161	Geronimo, Comanche	1059	D-6
394	Foraker, Osage	1271	G-1	305	Gerty, Hughes	700	G-5
25	Ford, Noble		F-2	125	Gibbon, Grant	1186	D-1
25	Foreman, Sequoyah		K-4	50	Gibson Sta., Wagoner	534	J-3
582	Forgan, Beaver		D-8	25	Gideon, Cherokee		J-3
20	Forney, Choctaw		H-7		Gilbert, Grant		
	Forrester, La Flore		K-5	25	Gilmore, Le Flore		K-5
546	Fort Cobb, Caddo	1235	C-5	354	Glencoe, Payne	1040	F-2
1353	Fort Gibson, Muskogee	529	J-3	40	Glendale, Le Flore		K-5
	Farming and stock raising. A national cemetery. Capital Hotel.			50	Glenn, Carter		F-6
	Fort Sill, Comanche	1200	D-6	25	Glenoak, Nowata		H-1
	U. S. military post. P. O. at Lawton.			428	Glenpool, Tulsa	700	H-3
965	Fort Towson, Choctaw	448	J-7	30	Glover, McCurtain	400	K-7
	Farming. Cotton produc- tion.			25	Golconda, Haskell		J-4
348	Foss, Washita	1622	B-4	50	Golden, McCurtain		K-7
125	Foster, Garvin	1000	E-6	287	Goltry, Alfalfa	1381	D-2
	Foster, Hughes				Goodland, Choctaw		H-7
50	Fox, Carter	950	E-6	75	Goodnight, Logan	851	F-3
109	Foyil, Rogers	755	H-2	50	Goodwater, McCurtain		K-7
911	Francis, Pontotoc	953	G-5	225	Goodwell, Texas	3286	B-8
	Farming and oil production. Frisco Ry. shops. Richey rooming house.			329	Gore, Sequoyah	500	J-4
25	Franklin, Cleveland (near Norman)		E-5	737	Gotebo, Kiowa	1048	C-5
100	Franks, Pontotoc	1150	G-6	228	Gould, Harmon		A-6
3822	FREDERICK, Tillman	1293	B-6	200	Gowen, Latimer	750	J-5
	County seat. Farming, stock and poultry raising. Cot- ton production. Hotels: Kelly, American.			266	Gracemont, Caddo	1281	D-5
90	Freedom, Woods		B-1	75	Grady, Jefferson	800	E-7
40	Frisco, Pontotoc		G-6	75	Graham, Carter	900	E-6
	Frisco, Canadian		E-4	200	Grainola, Osage	1199	G-1
20	Frogville, Choctaw		J-7	25	Grand, Ellis		A-3
25	Gabriel, Cherokee		J-3	1990	Grandfield, Tillman		C-7
804	Gage, Ellis	2136	A-2		Farming and stock raising. Grandfield Hotel. Brick Ho- tel.		
	Farming and stock raising. Lovell Hotel.			25	Grand Valley, Texas		C-8
25	Gaither, Okmulgee		H-4	912	Granite, Greer	1582	B-5
15	Galena, Woods		C-2		Farming and stock raising. Commercial Hotel.		
15	Gamet, Woods		C-1	395	Grant, Choctaw	465	J-7
295	Gans, Sequoyah	525	K-4	25	Granton, Major		C-2
1446	Garber, Garfield		E-2	150	Gray, Beaver		C-8
25	Garland, Haskell		J-4	25	Gray Horse, Osage		G-2
25	Garlington, Cimarron		A-8	500	Grayson, Okmulgee		H-4
292	Garvin, McCurtain	492	K-7		Greene, Okmulgee		G-3
309	Gate, Beaver		D-8	300	Greenfield, Blaine	1452	C-3
	Gay, Choctaw		H-7	25	Greenleaf, Cherokee		J-4
1452	Geary, Blaine	1518	D-4	10	Gresham, Cimarron		A-8
	Farming and stock raising. Hotel Bristow.				Griffin, Atoka		G-6
				25	Griggs, Cimarron		B-8
				50	Grimes, Roger Mills		A-4
				869	Grove, Delaware	710	K-2
				251	Guertie, Hughes		
					Guild, Lincoln		
				11757	GUTHRIE, Logan	973	E-3
					County seat. Farming and stock raising. A health re- sort having mineral waters and \$100,000 municipal bath		

Pop.	Co.	Alt.	Key	Pop.	Co.	Alt.	Key
			house.				
			Hotels: Iowne, Royal.				
1507	GUYMON,						
	Texas	3119	B-8				
	County seat.		Farming, fruit and stock raising.				
	Hotels: Wiloughby, Carter.						
2067	Haileyville,			615	Helena, Alfalfa	1396	D-2
	Pittsburg	650	H-5	50	Helsel, Cleveland		F-5
	Large coal mines.		C. R. I. & P. Ry. division point and shops. Farming district.	25	Heman, Woods		C-2
	R. R. Y. M. C. A. Hotel.			25	Henderson, Cleveland	1076	F-5
279	Hallett, Pawnee	920	G-2		Hendrix, Bryan		G-8
25	Hamburg, Roger Mills		A-3	125	Hennepin, Garvin		E-6
50	Hamden, Choctaw		H-7	1310	Hennessey, Kingfisher	1161	D-3
440	Hammon, Roger Mills		B-4		Farming, fruit and stock raising.		
460	Hanna, McIntosh		H-5		New State Hotel.		
90	Hanson, Sequoyah	570	K-4	5889	Henryetta, Okmulgee	693	H-4
	Hardesty, Texas		C-8		Farming coal mining and manufacturing.		
40	Hardwood, Coal		G-6		Hotels: Georgian, Alamo, Campbell.		
78	Hardy, Kay		F-1		Herbert, Atoka		
	Harjo, Pottawatomie		F-5	30	Herring, Roger Mills		B-4
75	Harmon, Ellis		A-2	75	Hess, Jackson		B-6
365	Harrah, Oklahoma	1071	F-4	80	Hester, Greer		B-5
	Harrington, McCurtain			50	Hewitt Carter		E-7
25	Harris, McCurtain		K-8	15	Heyburn, Creek		G-3
25	Harrisburg, Stephens		E-6		Hex Switch, Beckham		
	Harrison, Kiowa			453	Hickory, Murray	1233	F-6
20	Hart, Pontotoc		F-6		Hico, Cleveland		
3480	Hartshorne, Pittsburg	706	H-5	10	Higgins, Latimer		J-5
	Coal mining and farming.			25	Hill, Le Flore		K-5
	M. E. Underwood, Hotel.			209	Hillsdale, Garfield		D-2
2000	Haskell, Muskogee	600	H-3	744	Hinton, Caddo	1625	D-4
	Farming and cattle raising.			281	Hitchcock, Blaine	1281	D-3
	Oil production.			264	Hitchita, McIntosh		H-4
	Weiser Hotel.			10	Hix, Le Flore		K-5
25	Haskew, Woodward		B-1	10	Hoardsville, Okmulgee		H-4
629	Hastings, Jefferson	965	D-7	2936	HOBART, Kiowa	1531	B-5
	Hattonville, Ottawa				County seat. Farming, horticulture, stock raising and dairying.		
15	Hawley, Grant		D-1		Hotels: Starnes, Nash.		
400	Haworth, McCurtain	408	K-7	100	Hochatown, McCurtain	450	K-7
25	Hayden, Nowata		H-1	400	Hockerville, Ottawa		K-1
40	Haynes, Wagoner		J-3	50	Hodgen, Le Flore		K-5
125	Hayward, Garfield	1181	E-2	365	Hoffman, Okmulgee		H-4
40	Haywood, Pittsburg	696	H-5	25	Hogshooter, Washington		H-1
75	Hazel, Seminole		F-5	2032	HOLDENVILLE, Hughes	865	G-5
280	Headrick, Jackson	1365	B-6		County seat. Farming and stock raising. Cotton production.		
2157	Healdton, Carter	900	E-7		Keystone Hotel.		
	Farming, stock raising and oil production.			10	Holliday (Holiday), Comanche		C-6
	Hotel Arthur.						
40	Heaston, Canadian		D-4				
1850	Heavener						

Pop.	Co.	Alt.	Key	Pop.	Co.	Alt.	Key
1683	HOLLIS, Harmon		A-6	25	Ioland, Ellis		B-3
	County seat. Farming and stock raising.			50	Iona, Murray		F-6
	Ewing Hotel.			90	Isabella, Major	1307	D-2
200	Hollister, Tillman		C-6	20	Isom Springs, Marshall		F-7
15	Hollow, Craig		J-1	125	Ivanhoe, Beaver		D-8
	Holly Creek, McCurtain		K-7	40	Jackson, Bryan		H-7
25	Homer, Carter		E-6		Jackson Switch, Wagoner		
225	Homestead,			25	Jadie, McCurtain		K-7
	Blaine	1246	C-3	216	JAY, Delaware		K-2
2875	Hominy, Osage	782	G-2		County seat.		
	Abundant oil and gas. Stock raising.				Farming and stock raising.		
	Mrs. Owens and Mrs. Swaney, Hotels				Mrs. Price, Mrs. Lambert, Hotel.		
	Honobia, Le Flore			322	Jefferson,		
	Hood, Sequoyah		K-4		Grant	1045	E-1
946	Hooker, Texas	2985	C-8	1508	Jenks, Tulsa	550	H-3
	Farming.			10	Jenness, Okmulgee		H-4
50	Hoover, Garvin		E-6	910	Jennings,		
100	Hopeton, Woods	1432	C-2		Pawnee	915	G-2
	Horseshoe Ranch,			30	Jesse, Pontotoc		G-6
	Pontotoc		F-6	75	Jester, Greer		A-5
711	Howe, Le Flore	482	K-5	370	Jet, Alfalfa		D-1
25	Hoxbar, Carter		F-7	214	Jones,		
75	Hoyt, Haskell	550	J-4		Oklahoma	1140	E-4
100	Hughes, Latimer	550	J-5		Joplin, Ottawa		
6368	HUGO, Choctaw	547	J-7		Juanita, Pittsburg		
	County seat. Farming, fruit and stock raising. Railroad junction and division terminal. Mills.				July, McCurtain		
	Hotels: Hoffman, Webb and Otto.			25	Jumbo, Pushmataha		H-6
	Hula, Washington			50	Junction (Junction City),		
300	Hulbert, Cherokee		J-3		Comanche		D-6
75	Hulen, Cotton		D-6	150	Kanima, Haskell		J-4
	Hulsey, Latimer			154	Kansas, Delaware	1100	K-2
50	Humphreys, Jackson		B-6		Karns, Canadian		D-4
413	Hunter,			60	Katie, Garvin	900	E-6
	Garfield	1082	E-2	627	Kaw, Kay	984	F-1
25	Hurley, Cimarron		A-8	215	Keefeton, Muskogee		J-4
25	Huskey, Choctaw		J-7		Keenan, Woodward		A-2
686	Hydro, Caddo	1475	C-4	50	Keirsey (Kiersey),		
20	Iconium, Logan		F-3		Bryan	743	G-7
40	Ida, McCurtain	850	K-6		Keller, Carter		E-7
3067	IDABEL,			450	Kellyville,		
	McCurtain	474	K-7		Creek	787	G-3
	County seat. Farming and stock raising.			40	Kelso, Craig		J-1
	O. Rouleau, Hotel.			396	Kemp, Bryan		G-8
	Imo, Garfield			130	Kemp City, Bryan		G-8
25	Independence, Custer		C-3	255	Kendrick, Lincoln	830	F-3
195	Indianahoma,			413	Kenefic (Kenefick),		
	Comanche	1333	C-6		Bryan	600	G-7
100	Indianapolis,			25	Kent, Choctaw		H-7
	Custer	1660	C-4	175	Kenton, Cimarron		A-8
415	Indianola,			75	Keokuk Falls,		
	Pittsburg	700	H-5		Pottawatomie		G-4
50	Ingalls, Payne		F-3	494	Keota, Haskell	550	K-4
218	Ingersoll,			250	Ketchum, Craig		J-2
	Alfalfa	1198	C-1	300	Keystone, Pawnee	687	G-3
498	Inola, Rogers	602	H-3	40	Kiamichi, Pushmataha		J-6
				15	Kibby, Harper		B-1
				1663	Kiefer, Creek	698	G-3
				50	Kiersey (Keirsey),		
					Bryan		G-7
				231	Kildare, Kay	1102	F-1
				2447	KINGFISHER,		
					Kingfisher	1051	D-3
					County seat. Farming and		

Pop.	Co.	Alt.	Key	Pop.	Co.	Alt.	Key
			stock raising.				homa. Farming.
			Hotels: Kingfisher, Central.				Dane Hotel.
767	Kingston,		Marshall 783..... F-7	50	Lela, Noble		F-2
25	Kinlock, Marshall	 F-7	434	Lenapah,		
30	Kinnison, Craig	850 J-1		Nowata	761	H-1
393	Kinta, Haskell	550 J-5	50	Lenna, McIntosh		H-4
1287	Kiowa,			25	Lenora, Dewey		B-3
	Pittsburg	750 H-6	10	Lenox, Le Flore		K-6
	Farming and stock raising.			256	Leon, Love	800	E-7
	Hotels: Jefferson, Kiowa.			100	Leonard, Tulsa	600	H-3
10	Kiser, Garvin	 F-6		Leonel, Dewey		C-3
15	Klondike, Garvin	 E-6	100	Lequire,		
200	Knowles, Beaver	 D-8		Haskell	500	J-5
40	Komalty,			25	Letitia, Comanche		D-6
	Kiowa	1540 B-5	950	Lexington,		
896	Konawa,				Cleveland	1083	E-5
	Seminole	962 F-5	10	Liberty, Sequoyah		K-4
75	Kosoma,				Lightning Ridge, Pontotoc		
	Pushmataha	493 H-6	100	Lima, Seminole		G-5
2078	Krebs, Pittsburg	646 H-5	15	Limestone Gap (Gap),		
	Large coal mines.				Atoka		H-6
	Katy Hotel.			125	Lincolnvillle,		
169	Kremlin,				Ottawa	800	K-1
	Garfield	1123 D-2	1543	Lindsay, Garvin	982	E-5
25	Kullituklo, McCurtain	 K-8		Farming and stock raising.		
1069	Kusa, Okmulgee	 H-4		Important broom corn mar-		
	Zinc Mills.				ket. Oil prospects.		
25	Lacey, Kingfisher	 D-3		New Lindsay Hotel.		
	Lacrosse, Caddo		25	Linn, Marshall		G-7
15	Ladessa, Greer			25	Little, Seminole		G-4
	(Mangum 6 mi.)	 B-5	10	Loaf, Mayes		J-2
262	Lahoma, Garfield	1255 D-2	10	Loam, Carter		E-7
248	Lakemp, Beaver	 D-8	25	Lockridge,		
250	Lamar, Hughes	 G-5		Logan	1138	E-3
130	Lambert,			200	Loco, Stephens	950	E-6
	Alfalfa	1300 C-1	1587	Locust Grove,		
586	Lamont, Grant	997 E-1		Mayes	600	J-2
100	Lane, Atoka	 H-7	15	Lodi, Latimer		J-5
259	Langston, Logan	962 E-3	75	Logan, Beaver		D-8
15	Lark, Marshall	 F-7	222	Lone Grove,		
10	Latham, Le Flore	 K-5		Carter	950	E-7
25	Laura, Latimer	 J-6	657	Lone Wolf,		
476	Laverne, Harper	 A-1		Kiowa	1554	B-5
20	Laverty, Grady	 D-3		Lone Star, Cotton		
25	Lawrence, Pontotoc	 F-6	100	Long, Sequoyah	900	K-4
8930	LAWTON,			308	Longdale, Blaine	1649	C-3
	Comanche	1111 D-6	240	Lookeba, Caddo	1307	D-4
	County seat. Farming, stock			25	Lookout, Woods		B-1
	and poultry raising. Cot-			25	Lorena, Beaver		C-8
	ton production and oil re-			75	Louis, Harmon		A-6
	fining. Fort Sill military			191	Loveland, Tillman		C-7
	reservation adjoins city.			220	Lovell, Logan		E-3
	Hotels: Keegan Midland.			15	Loving, Le Flore		K-5
10	Layton, Garvin	 E-6	75	Lowrey, Cherokee	1150	J-3
20	Leach, Delaware	1100 J-2	100	Loyal (Kiel), Kingfisher		D-3
150	Lebanon,			250	Lucien, Noble	1103	E-2
	Marshall	650 F-7		Luckey, Cherokee		J-3
750	Leedey, Dewey	 B-3		Ludlow, Le Flore		J-6
250	Leflore, Le Flore	536 J-5	150	Lugert, Kiowa	1537	B-5
15	Legate, Love	 F-7	25	Lukfata, McCurtain		K-7
	Leger, Jackson		150	Lula, Pontotoc	700	G-6
1898	Lehigh, Coal	595 G-6	601	Luther,		
	Largest coal field in Okla-				Oklahoma	929	F-4
				400	Lutie, Latimer	600	J-7

Pop.	Co.	Alt.	Key	Pop.	Co.	Alt.	Key
20	Mishak, Oklahoma			50	Nerotown, McIntosh		H-4
	(Moore 7 mi.)		E-4	125	Newalla,		
30	Mocane, Beaver		D-8		Oklahoma	1100	F-4
30	Moffett, Sequoyah		K-4	75	Newby, Creek	750	G-3
	Mohawk, Tulsa		H-2	40	Newcastle, McClain		E-4
	Moller, Pontotoc			2533	NEWKIRK,		
	Monarch, Okmulgee		H-4		Kay	1148	F-1
125	Monroe,				County seat. Farming and		
	Le Flore	530	K-5		oil.		
	Moodys, Cherokee		J-3		Hotels: Park, Kentucky.		
254	Moore,			434	New Marshall		
	Cleveland	1242	E-4	40	Newport, Carter		E-7
592	Mooreland,				Niles, Canadian		D-4
	Woodward	1891	B-2	200	Ninnekah, Grady	1077	D-5
150	Moorewood, Custer		B-3	497	Noble,		
353	Morris,				Cleveland	1173	E-5
	Okmulgee	713	H-4	10	Nolla, Pushmataha		J-6
353	Morrison, Noble	931	F-2	40	Non, Hughes		G-5
15	Morse, Okfuskee		G-4	10	Norfolk, Payne		F-3
15	Morvin, Pottawatomie		F-5	100	Norge, Grady	1274	D-5
15	Moseley,			5004	NORMAN,		
	Delaware	1100	K-2		Cleveland	1165	E-5
1078	Mounds, Creek	711	G-3		County seat. Farming and		
334	Mountain Park,				stock raising. State Uni-		
	Kiowa	1365	C-6		versity and insane asylum.		
917	Mountain View,				Pierson Hotel. Cottage		
	Kiowa	1312	C-5		Home.		
150	Moyers,			20	Norris, Latimer		J-5
	Pushmataha	480	H-6	95	North Enid,		
693	Muldrow,				Garfield	1250	D-2
	Sequoyah	513	K-4		N. McAlester, Pittsburg		H-5
385	Mulhall, Logan	936	E-3	483	N. Miami, Ottawa		J-1
15	Mulkey, Carter		F-7	250	N. Muskogee, Wagoner		J-3
15	Munice, Dewey		C-3	4471	NOWATA,		
75	Murphy, Mayes	600	J-3		Nowata	696	H-1
100	Muse, Le Flore	750	K-6		County seat. Farming. Oil		
30277	MUSKOGEE,				and gas wells. 21 gasoline		
	Muskogee	602	J-3		plants.		
	County seat. Farming and				Hotels: Campbell, Carey.		
	stock raising. Oil produc-				Savoy.		
	tion. Railroad center hav-				Noxie, Nowata		H-1
	ing railroad shops.			50	Numa, Grant	1117	E-1
	Hotels: Severs, Turner,			20	Nuyaka, Okmulgee		G-4
	Plaza.				Oakdale, Caddo		
175	Mustang,			75	Oak Hill, McCurtain		K-7
	Canadian	1355	E-4		Oakhurst, Tulsa		
169	Mutual, Woodward		B-2	420	Oakland,		
30	Naples, Grady		E-5		Marshall	800	F-7
40	Narcissa, Ottawa		J-1	25	Oakman, Pontotoc		G-5
200	Nardin, Kay	1084	E-1	40	Oaks, Delaware		K-3
450	Nash, Grant		D-1	363	Oatoosa		
50	Nashoba,			224	Oakwood, Dewey	1854	C-3
	Pushmataha	650	J-6	30	Oberlin, Bryan		H-7
439	Nashville, Grant				Obi, Sequoyah		K-4
10	Natura, Okmulgee		H-3	419	Ochelata,		
126	Navina, Logan	1050	E-3		Washington	749	H-2
40	Nebo, Murray		F-6	30	Ocina (Moravia),		
20	Needmore, Cleveland				Beckham		A-5
	(Noble 11 mi.)		E-5	25	Octavia, Le Flore		K-6
450	Nelagoney,				Odell, McCurtain		K-7
	Osage	776	G-1	20	Odetta, Kiowa		C-6
20	Nellida, Carter		F-2	50	Oglesby,		
30	Nelson, Choctaw		H-7		Washington		H-1
15	Neodesha, Wagoner		J-3	75	Oil City, Carter		E-7

Pop.	Co.	Alt.	Key	Pop.	Co.	Alt.	Key
2231	Oilton, Creek		G-3	600	Paden, Okfuskee		G-4
	Oil district. Oil wells; also farming.			50	Page, Le Flore	918	K-6
	Hotel Royal. Oilton Hotel.			50	Palmer, Murray		F-6
449	Okarche,			568	Panama, Le Flore	453	K-5
	Canadian	1235	D-3	25	Panola, Latimer	625	J-5
	Okay (N. Muskogee),			363	Paoli, Garvin	928	E-5
	Wagoner		J-3	10	Parker, Coal		G-6
1084	Okeene, Blaine	1192	D-3	175	Park Hill,		
	Farming.				Cherokee	750	J-3
	Hotel Hutsel.			25	Parkland, Lincoln		F-3
2162	OKEMAH,			50	Patterson,		
	Okfuskee	850	G-4		Latimer	750	J-5
	County seat. Farming and stock raising. Oil.			3694	PAULS VALLEY,		
	Hotels: Broadway, Main.				Garvin	884	F-6
20	Okesa, Osage		G-1		County seat. Farming and stock raising. Cotton production.		
100	Okfuskee,				Hotels: Leland, Commercial.		
	Okfuskee	700	G-4	6414	PAWHUSKA,		
91258	OKLAHOMA CITY, (Okla-homa), Okla.	1214	E-4		Osage	800	G-1
	Capital of Oklahoma and county seat. Farming. Railroad center and division point. Has about 200 manufactories of various kinds.				County seat. Farming and stock raising district. Oil.		
	Hotels: Lee Huckins, King-kade, Shirvin, Lawrence.				Duncan Hotel.		
17430	OKMULGEE,			2418	PAWNEE,		
	Okmulgee	678	H-4		Pawnee	822	F-2
	County seat. Farming, stock raising, coal mines, oil and natural gas wells. Manufacturing.				County seat. Farming, stock raising, berries and oil.		
	Hotels: Young, Parkinson, Antlers, Roy.				Hotels: National, Graham.		
335	Oktaha, Muskogee	592	J-4	75	Paw Paw,		
	Oleta, Ellis				Sequoyah	400	K-4
40	Olive, Creek		G-3	10	Payne, McClain		E-5
75	Olney, Coal	600	G-6	90	Payson, Lincoln	827	F-4
665	Olustee,				Pearsonia, Osage		G-1
	Jackson	1339	B-6	150	Peckham, Kay	1109	F-1
175	Omega, Kingfisher		D-3		Peek, Ellis		A-3
15	Ona, Texas		B-8	157	Peggs, Cherokee	900	J-3
50	Onapa, McIntosh		H-4	150	Pemeta, Creek		G-3
	Onasco, Caddo			25	Peno, Le Flore		K-4
100	Oneta, Wagoner		H-3	100	Pensacola,		
	Onyx, Garfield				Mayes	650	J-2
277	Oologah,			166	Peoria, Ottawa	900	K-1
	Rogers	657	H-2	608	Perkins, Payne	829	F-3
150	Optima, Texas	3010	C-8	3154	PERRY, Noble	989	E-2
25	Orienta, Major		C-2		County seat. Farming, stock and poultry raising, oil production.		
15	Orion, Major		C-2		Hotels: New St. Louis. Delma.		
161	Orlando, Logan	1078	E-3	891	Pershing, Osage		
254	Orr, Love	850	E-7		(Wynona 6 mi.)		G-2
757	Osage, Osage	725	G-2		Perth, Logan		
	Oscar, Jefferson		E-7	30	Petersburg,		
40	Oswalt, Love		E-7		Jefferson		E-7
25	Ottawa, Ottawa		K-4	10	Pettit, Cherokee		J-3
100	Overbrook, Love	737	F-7	769	Phillips, Coal	601	G-6
379	Owasso, Tulsa	607	H-2	25	Phroso, Major		C-2
	Owl, Coal		G-6		Piatt, Tulsa		G-3
10	Ozark, Cherokee		J-4	9676	Picher, Ottawa		K-1
					Lead and zinc mining.		
					Hotels: American, Connell.		
					Pickens, McCurtain		J-6
				213	Piedmont,		
					Canadian	1180	E-4
				75	Pierce, McIntosh	600	H-4

Pop.	Co.	Alt.	Key	Pop.	Co.	Alt.	Key
	Pierceton, Kay						
40	Pike, Love	750	E-7				
25	Pine, Coal		G-6				
10	Piney, Adair		K-3				
10	Pink, Pottawatomie (near Tecumseh)		F-4				
40	Pirtle, Bryan	590	G-7				
892	Pittsburg, Pittsburg	750	H-6				
	Coal mine.						
100	Platter, Bryan	668	G-7				
10	Pleasant Hill, McCurtain		K-8				
150	Pleasant Valley, Logan	913	E-3				
50	Pocahontas, Pittsburg		H-5				
350	Pocasset, Grady	1200	D-5				
25	Pollard, McCurtain		K-8				
7051	Ponca City, Kay	1003	F-1				
	Farming and stock raising. Many producing oil and gas wells. 50 000 barrel output of refined oil daily. \$100,000 Municipal Auditorium. Arcade Hotel.						
965	Pond Creek (Pondcreek), Grant	1062	D-1				
	Farming and stock raising. Clem Hotel.						
150	Pontotoc, Johnson	1000	G-6				
	Pony Creek, Texas		B-8				
100	Pooleville, Carter	1000	E-6				
30	Port, Washita		B-5				
597	Porter, Wagoner	617	H-3				
533	Porum, Muskogee	650	J-4				
2679	POTEAU, Le Flore	454	K-5				
	County seat. Farming dis- trict with coal mines in the vicinity. Lumbering and manufacturing. Oil refin- eries. Howell House. Commercial Hotel. Milner Hotel.						
50	Powell, Marshall		F-7				
1127	Prague, Lincoln		F-4				
	Fruit raising. Oil mill. Hotels: Barta, Arlington, Thomas.						
	Praper, Creek						
25	Prentiss, Beckham		A-4				
300	Preston, Okmulgee	774	H-3				
25	Price, Seminole		G-4				
60	Proctor, Adair	788	K-3				
60	Provence, Carter	871	F-7				
164	Prue, Osage	695	G-2				
1767	PRYOR, Mayes	627	J-2				
	County seat. Farming and stock raising. A health resort having radium water. Terry House. Butler Ho- tel.						
2938	PURCELL, McClain	1093	E-5				
	County seat. Farming. Cot- ton production. Hotels: Love, Smith, Clifton.						
75	Purdy, Garvin	1000	E-6				
250	Putnam, Dewey		C-3				
25	Qualls, Cherokee		J-3				
2000	Quapaw, Ottawa	841	K-1				
	Lead and zinc mining. Farming.						
300	Quay, Pawnee	904	F-3				
310	Quinlan, Woodward	1746	B-2				
1557	Quinton, Pittsburg		J-5				
	Cotton production.						
25	Rabit, Delaware		J-1				
10	Ragsdale, Beaver		C-8				
15	Raiford, McIntosh	700	H-4				
703	Ralston, Pawnee	801	F-2				
793	Ramona, Washington	667	H-2				
323	Randlett, Cotton		C-7				
75	Randolph, Johnston	620	F-7				
15	Range, Texas		C-8				
75	Rankin, Roger Mills		A-4				
90	Rattan, Pushmataha	500	J-7				
513	Ravia, Johnston	755	F-7				
40	Ray, Cherokee		J-3				
40	Reagan, Johnston	900	G-6				
15	Reason, Ellis		A-3				
	Recyl, Latimer		J-5				
336	Redbird, Wagoner	607	H-3				
15	Redden, Atoka		H-6				
844	Red Fork, Tulsa	677	H-3				
50	Redland, Sequoyah		K-4				
15	Redmoon, Roger Mills		A-3				
593	Red Oak, Latimer	588	J-5				
329	Redrock, Noble	884	F-2				
125	Reed, Greer		A-5				
125	Reeding, Kingfisher	1104	F-3				
	Regnier, Cimarron						
75	Reichert, Le Flore	500	K-5				
132	Renfrow, Grant		E-1				
255	Rentiesville, McIntosh		J-4				
30	Retrop, Washita (near Sentinel)		B-5				
50	Retta, Kay	1032	E-1				
	Rex, Wagoner		J-3				
50	Rhea, Dewey		B-3				

Pop.	Co.	Alt.	Key
	Rice, Texas		B-8
	Rich, Atoka		
	Richardville, McIntosh		
	Richert, Le Flore		
125	Richland,		
	Canadian	1358	D-4
50	Richmond, Woodward		B-2
1039	Ringling, Jefferson		E-7
	Farming and live stock. Cotton raised. O. N. M. & P. Ry. division point.		
	Hotels: Dean, Fish.		
10	Ringold, McCurtain		J-7
225	Ringwood,		
	Major	1320	D-2
406	Ripley, Payne	812	F-3
	Riverside, Beaver		D-8
25	Robberson, Garvin		E-6
50	Roberta, Bryan		G-7
15	Rock Island,		
	Le Flore		K-5
322	Rocky, Washita	1639	B-5
	Rocky Ford, Grady		
1138	Roff, Pontotoc	1210	F-6
	Farming, dairying, oil and gas wells. Cotton production.		
271	Roland, Sequoyah		K-4
125	Roll, Roger Mills		A-3
	Romia, Bryan		G-7
125	Romulus,		
	Pottawatomie	905	F-5
362	Roosevelt,		
	Kiowa	1458	B-5
50	Rose, Mayes		J-2
225	Rosedale, McClain		F-5
181	Rosston, Harper		A-1
40	Rossville, Lincoln		F-4
100	Row, Delaware	1100	K-2
25	Royal, Stephens		E-6
	Rubottom, Love		E-7
25	Ruby, Nowata		H-1
100	Rufe, McCurtain	500	J-7
768	Rush Springs,		
	Grady	1290	D-5
25	Russell, Greer		A-6
20	Russell Creek, Craig		J-1
25	Russellville, Pittsburg		J-5
25	Russet, Johnston		F-7
25	Ruthdale, Nowata		H-1
1379	Ryan, Jefferson	812	D-7
	Farming and stock raising. Cotton.		
	Rogers House. Jefferson Hotel.		
90	Sac and Fox Agency, Lincoln		G-4
75	Sacred Heart,		
	Pottawatomie	1040	F-5
25	Saddle Mountain, Kiowa		C-5
10	Sadie, Sequoyah		K-4
25	Sageeyah, Rogers		H-2
20	Salem, McIntosh		H-4
411	Salina, Mayes	600	J-2

Pop.	Co.	Alt.	Key
2255	SALLISAW,		
	Sequoyah	531	K-4
	County seat. A fine farming district.		
	Hotels: Bonham, Phoenix.		
150	Saltfork, Grant	993	E-2
15	Sampsel, Cimarron		B-8
	Sank Creek, Grant		D-1
	Sandbluff, Choctaw		
4076	Sand Springs,		
	Tulsa	655	G-3
	Farming country, oil and gas wells. S. S. Ry. shops. Manufacturing.		
	E. O. Cart, Hotel.		
11634	SAPULPA		
	Creek	722	G-3
	County seat. Farming, fruit, stock raising and mining. Oil and gas wells and manufacturing. Frisco Ry. division point and shops.		
	Oakmore Hotel.		
25	Saratoga, Woods		B-1
60	Sardis,		
	Pushmataha	600	J-6
355	Sasakwa,		
	Seminole	820	G-5
250	Savanna,		
	Pittsburg	726	H-5
100	Sawyer, Choctaw	422	J-7
10	Saylor, Haskell		J-4
1703	SAYRE,		
	Beckham	1810	A-4
	County seat. Farming. C. R. I. & P. Ry. division point and shops.		
	English Kitchen. Hedgpeth Hotel.		
25	Schlegel, Payne		F-3
50	Schoolton, Seminole		G-4
200	Schulter,		
	Okmulgee	665	H-4
150	Scipio, Pittsburg	750	H-5
25	Scott, Caddo		D-4
25	Scraper, Cherokee		K-3
201	Scullin, Murray	1219	F-6
20	Sedan, Kiowa		C-5
323	Seiling, Dewey		C-3
854	Seminole,		
	Seminole	866	F-5
896	Sentinel,		
	Washita	1611	B-5
	Farming.		
	Wright Hotel.		
118	Seward, Logan	965	E-3
25	Sewell, Pottawatomie (near Brooksville)		F-4
100	Shadypoint,		
	Le Flore	448	K-5
1409	Shamrock, Creek		G-3
	Oil fields, refineries and cotton gin.		
250	Sharon, Woodward		B-2

Pop.	Co.	Alt.	Key	Pop.	Co.	Alt.	Key
1365	Shattuck, Ellis	2232	A-2	20	Stafford, Custer		B-4
	Farming and stock raising.			20	Standing Rock, Atoka		G-6
	P. Barchofer, Hotel. Brown's Hotel.			40	Stanley, Pushmataha		J-6
15348	Shawnee,				Stapp, Le Flore		
	Pottawatomie	1043	F-4	10	Star, Haskell		K-4
	Farming and stock raising.				Staunton Carter		E-7
	Oil and gas wells. Cotton,			150	Stecker, Caddo		D-5
	mule and poultry market.			100	Steedman,		
	Rock Island and Santa Fe				Pontotoc	750	G-5
	Ry shops. Manufacturing.				Steeley, Delaware		K-2
	Hotel Norwood. Hotel Wol-			50	Stella, Cleveland		F-4
	cott.			265	Sterling, Comanche		D-6
25	Shawneetown,			703	Sterrett		
	McCurtain		K-7	62	Stidman,		
15	Shay, Marshall		F-7		McIntosh	600	H-4
20	Sherman, Major		C-2	1797	STIGLER,		
15	Sherwood, McCurtain		K-6		Haskell	550	J-4
25	Shiloh, Logan		F-3		County seat. Farming and		
75	Short, Sequoyah		K-4		stock raising.		
10	Shrewder, Harmon		A-5		Hotels: Stigler, Travelers.		
25	Shults, McCurtain		K-7	4701	STILLWATER,		
50	Sickles, Caddo		C-4		Payne	870	F-3
150	Silo, Bryan	850	G-7		County seat. Farming and		
25	Simon, Love		E-7		stock raising. Manufactur-		
20	Simpson, Marshall		F-7		ing. A. & M. College.		
	Sinnett, Pawnee				Hotels: Nichols, Yost.		
268	Skedee, Pawnee	843	F-2	1155	STILWELL,		
1653	Skiatook, Tulsa	650	H-2		Adair	1110	K-3
	Sledge, Stephens				County seat. Farming and		
10	Sleeper, Cherokee		J-3		stock raising.		
	Slim, McCurtain		J-7		Crocker Hotel.		
125	Smithville,				Stock Yards,		
	McCurtain	700	K-6		Oklahoma		E-4
1197	Snyder, Kiowa	1355	C-6	150	Stonebluff, Wagoner		H-3
	Farming. Cotton production.			622	Stonewall,		
50	Sobol, Pushmataha		J-7		Pontotoc	687	G-6
538	Soper, Choctaw	528	H-7	10	Story, Garvin		E-5
	Sophia, Beaver			400	Strang, Mayes		J-2
	Souten, Pawnee			964	Stratford,		
75	Southard, Blaine	1554	C-3		Garvin	1100	F-5
179	South Coffeyville,			200	Stringtown,		
	Nowata	750	H-1		Atoka	625	H-6
472	Sparks, Lincoln	802	F-4	350	Strong City,		
100	Spaulding,				Roger Mills		A-4
	Hughes	799	G-5	1361	Stroud, Lincoln	884	G-3
100	Spavinaw,				Farming district with oil		
	Mayes	650	J-2		and gas wells.		
15	Speer, Choctaw		H-7		St. Louis Hotel.		
75	Speermore, Harper		A-2	400	Stuart, Hughes	722	G-5
200	Spencer,			10	Sturm, Caddo		C-5
	Oklahoma	1165	E-4	218	Sugden,		
50	Spencerville, Choctaw		J-7		Jefferson	848	D-7
487	Sperry, Tulsa	600	H-2	3667	SULPHUR,		
1162	Spiro, Le Flore	490	K-4		Murray	951	F-6
	Farming district.				County seat. Splendid farm-		
	Wheaton Confectionery Co.,				ing and stock raising coun-		
	Hotel.				try. Asphalt beds. Noted		
225	Springer,				mineral springs in Platt		
	Carter	900	F-7		National Park, outside city.		
	Springtown, Atoka				Artesian Hotel. I. H. Hol-		
200	St. Louis, Ottawa		K-1		lenhead Hotel.		
40	St. Louis,			50	Summerfield,		
	Pottawatomie		F-5		Le Flore	500	K-5
				15	Summit, Muskogee		J-4

Pop.	Co.	Alt.	Key	Pop.	Co.	Alt.	Key
65	Sumner, Noble	920	F-2				Farming and stock raising.
40	Sumpter, Kay		E-1				Eureka Hotel.
40	Sunset, Beaver		D-8				Thomasville, Le Flore
231	Supply, Woodward		A-2	50	Ti, Pittsburg	750	H-6
50	Surprise, Beaver		D-8	30	Tiawah, Rogers		H-2
	Sutter, Le Flore			10	Tiffin, Beaver		D-8
15	Swan, Custer		C-4	30	Tinney, Comanche		C-6
100	Sweetwater, Roger Mills		A-4		Tip, Mayes		J-2
169	Swink, Choctaw	500	J-7	727	Tipton, Tillman		B-6
10	Sycamore, Delaware		K-2	1871	TISHOMINGO, Johnston	650	F-7
25	Sylvian, Seminole		G-4		County seat. Farming and stock raising. Summer re- sort near.		
10	Syria, Woods		C-2		Hotels: Smith, Keeth.		
40	Tabler, Grady		D-5		Titanic, Adair		K-3
25	Tabor, Creek		G-3	10	Tivoli, Major		C-2
553	Taft, Muskogee		H-3	15	Todd, Craig		J-1
2271	TAHLEQUAH, Cherokee	861	J-3	10	Togo, Major		C-2
	County seat. Farming and stock raising. A summer resort. Normal school.				Tolon, Okmulgee		H-4
	Hotels: Redburn, Silver Belt.				Tom, McCurtain		K-8
197	Talala, Rogers	685	H-2	1448	Tonkawa, Kay		E-1
690	Talihina, Le Flore	687	J-6		Farming. Miss Gardner, Hotel.		
15	Talley, Cherokee		J-3	150	Trail, Dewey		B-3
365	TALOGA, Dewey		C-3		Trenton, Okfuskee		
	County seat. Farming. Hotel Taloga.			250	Tribbey, Pottawatomie	1020	F-5
501	Tamaha, Haskell	500	J-4	100	Trousdale, Pottawatomie	953	F-5
50	Tangier, Woodward	2124	B-2	50	Troy, Johnston	918	F-6
2640	Tar River (Cardin), Ottawa		K-1	225	Tryon, Lincoln	1026	F-3
	Lead and zinc mining.			25	Tucker, Le Flore		K-4
15	Tate, Seminole		G-5	189	Tallahassee, Wagoner	550	J-3
75	Tatums, Carter		E-6	72075	TULSA, Tulsa	697	H-3
50	Taylor, Cotton		D-7		County seat. Railroad cen- ter. Lies in corn district; also oil, gas and coal area; timber, stone and sand likewise abundant. Many fac- tories and wholesale houses. Hotel Tulsa. Ketchum Ho- tel.		
20	Teacross, Harmon		A-5	387	Tupelo, Coal	600	G-6
1429	TECUMSEH, Pottawatomie	1068	F-4	15	Turkey Ford, Delaware		K-1
	County seat. Fertile farm- ing district. Cotton produc- tion. Cottage Hotel.			40	Turley, Tulsa		H-2
	Tecumseh Jr., Pottawatomie		F-4		Tuscania, Cherokee		
15	Tegarden, Woods		C-1	248	Tushka, Atoka	650	G-6
906	Temple, Cotton	985	D-7	200	Tuskahoma, Pushmataha	571	J-6
20	Teresita, Cherokee		J-3	10	Tuskegee, Creek		G-4
300	Terlton, Pawnee	782	G-2	50	Tussy, Carter		E-6
506	Terral, Jefferson	847	D-7	590	Tuttle, Grady	1317	E-4
100	Texanna, McIntosh	600	J-4	25	Tyler, Marshall		F-7
687	Texhoma, Texas	3483	B-8	25	Tyrola, Pontotoc		F-5
298	Texola, Beckham	2148	A-4	500	Tyrone, Texas	2940	C-8
150	Thackerville, Love	862	F-8		Ulan, Pittsburg		H-5
1223	Thomas, Custer	1724	C-3	100	Uncas, Kay	1032	F-1
				25	Unger, Choctaw		H-7
				250	Union (Union City), Canadian	1330	D-4
					Usna, Cimarron		B-8

Pop.	Co.	Alt.	Key	Pop.	Co.	Alt.	Key
100	Utica, Bryan		G-7	100	Warwick,		
25	Valley, Pawnee		F-2		Lincoln	851	F-4
809	Valliant,			300	Washington,		
	McCurtain	511	J-7		McClain	1150	E-5
15	Vamoosa, Seminole		F-6	100	Washita,		
200	Vanoss, Pontotoc		F-6		Caddo	1482	D-5
	Van Tress, Latimer			25	Washunga, Kay		F-1
75	Velma,			25	Waterloo, Logan		E-3
	Stephens	1000	E-6	50	Watkins, Tulsa		H-3
129	Vera,			1678	WATONGA,		
	Washington	632	H-2		Blaine	1522	D-3
496	Verden, Grady		D-5		County seat. Farming and stock raising district.		
75	Verdigris,				Hotels: Fisher, Rock Island, Palace.		
	Rogers	615	H-2	100	Watoya,		
100	Vernon, McIntosh		H-5		Nowata	722	H-2
1176	Vian, Sequoyah	548	J-4	30	Watson, McCurtain		K-6
750	Vici, Dewey		B-2	481	Watts, Adair		K-3
25	Victor, Le Flore		K-5	20	Wauhillau, Adair		K-3
25	Victory, Jackson		B-6	463	Waukomis,		
50	Vinco (Perkins Sta.),				Garkfield	1240	D-2
	Payne	829	F-3	3204	WAURIKA,		
	Vining, Alfalfa		D-1		Jefferson	854	D-7
5010	VINITA, Craig	698	J-1		County seat. Farming, stock raising, oil and gas wells.		
	County seat. Farming and stock raising. Sinclair Oil Refinery. Insane asylum.				C. R. I. & P. Ry. shops and round house.		
	Hotels Cobb, Vinita.				Hotels: Walton, Steward, American.		
100	Vinson, Harmon		A-5	429	Wayne,		
15	Virgil, Choctaw		J-7		McClain	1102	E-5
	Vista, Pottawatomie			1500	Waynoka,		
60	Vivian, McIntosh		H-4		Woods	1473	C-2
15	Voca, Atoka		G-7		Farming and stock raising.		
50	Vrona, Sequoyah		K-4		A. T. & S. F. Ry. division point with shops.		
25	Waco, Pottawatomie				Hotels: Commercial, Dew Drop Inn.		
	(near McLoud)		F-4	40	Wayside,		
100	Wade, Bryan		H-7		Washington	750	H-1
3436	WAGONER,			1929	Weatherford,		
	Wagoner	580	J-3		Custer	1645	C-4
	County seat. Farming, fruit and stock raising. Coal mining, oil and gas wells.				Farming. Cattle and hog raising. Normal school.		
	Germicide Sanitarium.				Park Hotel.		
	Majestic Hotel.			25	Weathers, Pittsburg		H-6
254	Wainwright,			10	Webb, Dewey		B-3
	Muskogee	650	H-4	480	Webbers Falls,		
338	Wakita, Grant	1174	D-1		Muskogee	450	J-4
25	Walls Le Flore		K-5		Webster, Muskogee		H-3
3032	WALTERS (Walter			25	Weer, Wagoner		H-3
	Sta.), Cotton	981	D-6	40	Wekiwa, Tulsa	662	G-3
	County seat. Farming, fruit and stock raising and oil.			696	Welch, Craig	827	J-1
	Lines Hotel. Cotton Hotel.			1588	Weleetka,		
783	Wanette,				Okfuskee	693	G-4
	Pottawatomie	970	F-5		Farming and stock raising.		
404	Wann, Nowata	862	H-1		Oil and gas wells. Ft. S. & W. R. R. shops.		
1038	Wapanucka,				Hotel Florence.		
	Johnston	650	G-6	90	Welling,		
	Farming.				Cherokee	734	K-3
10	Wardsprings,			650	Wellston,		
	Pittsburg		H-5		Lincoln	879	F-4
125	Wardville, Atoka		H-6				
318	Warner,						
	Muskogee	550	J-4				
75	Warren, Jackson		B-5				

Pop.	Co.	Alt.	Key	Pop.	Co.	Alt.	Key
100	Welty, Okfuskee	700	G-4		An oil town.		
	Wesley, Atoka		H-6		Wirt Hotel.		
15	West Point, Payne			586	Wister,		
	(Glencoe 6 mi.)		F-2		Le Flore	480	K-5
1000	West Tulsa,			25	Witcher, Oklahoma		E-4
	Tulsa	642	H-3	10	Wolt, Seminole		F-5
	Manufacturing.			10	Wooddale, Major		C-2
956	Westville,			125	Woodford,		
	Adair	1135	K-3		Carter	950	E-6
	Farming section having			443	Woodville,		
	hardwood timber.				Marshall	594	G-7
1422	Wetumka,			3849	WOODWARD,		
	Hughes	743	G-5		Woodward	1893	B-2
	Farming, fruit and stock				County seat. Good farming		
	raising. A cotton market.				and stock raising district.		
	Brick Hotel. Frisco Hotel.				Wholesale and jobbing center.		
1520	WEWOKA,				Hotels: Ideal, Baker, Central.		
	Seminole	800	G-5		Wouldbe, Noble		
	County seat. Fine farming			250	Wright City (Bismark),		
	section.				McCurtain		J-7
	Hotels: Reed, Wewoka,			274	Wyandotte,		
	Commercial.				Ottawa	760	K-1
125	Wheatland,			125	Wybark,		
	Oklahoma	1315	E-4		Muskogee	515	J-3
15	Wheeless, Cimarron		A-8	2200	Wynne Wood (Wynne-		
	White, Le Flore		K-5		wood), Garvin	855	F-6
25	Whiteagle (White Eagle),				Farming and oil wells. Cotton		
	Kay		F-2		production.		
25	White Bead, Garvin		E-6		Esbridge Hotel.		
200	Whitefield,			2749	Wynona, Osage	884	G-2
	Haskell	550	J-4	90	Yahola, Muskogee		H-3
25	Whitehorse, Woods		C-1	2601	Yale, Payne	803	F-3
100	Whiteoak, Craig	767	J-2		Farming and fruit raising.		
100	Whitesboro,				Oil district.		
	Le Flore	700	K-6		Hotels: Yale, Elk, American.		
2226	WILBURTON,			30	Yanush, Latimer		J-6
	Latimer	654	J-5	40	Yarnaby, Bryan		G-8
	County seat. Farming and			10	Yates, Payne		F-3
	mining 27 coal mines.			286	Yeager, Hughes	792	G-5
	Lumbering.				Yelton, Harper		A-1
	Hotels: Commercial, Scott.			50	Yewed,		
298	Wild Cat, McIntosh				Alfalfa	1245	D-1
	(see Grayson)		H-4	100	Yonkers, Cherokee		J-3
25	Wilkerson, Muskogee		J-4	25	York, Pontotoc		F-6
10	Wilkins, Cimarron		A-8	50	Yuba, Bryan		G-8
25	Willard, Harper		A-1	1016	Yukon,		
250	Williams,				Canadian	1295	E-4
	Le Flore	450	K-5		Farming.		
50	Willis, Marshall	577	F-7		Zafra, Le Flore		K-6
286	Willow, Greer		B-5		Zeb, Cherokee		
25	Willowbar, Cimarron		B-8	30	Zena, Delaware		K-2
	Willow View, Cleveland				Zincville (St. Louis),		
2286	Wilson, Carter		E-7		Ottawa		K-1
25	Wilzetta,				Zita, Carter		E-6
	Lincoln	830	F-4	100	Zoe, Le Flore		K-5
25	Wimer, Nowata		J-1	15	Zoraya, Pushmataha		H-6
15	Winchester, Woods		C-1				
1500	Wirt. Carter		E-7				

Stream	Key	Stream	Key	Stream	Key
Arkansas River.....	J-4	Eagle Chief Cr.....	C-1	Neosho River.....	J-2
Barren Fork	K-3	Elk Creek.....	B-5	Nochonubbe River...K-6	
Beaver Creek	A-2	Elk River.....	K-1	N. Fk. Canadian R...B-2	
Big Beaver Cr.....	D-7	Elk Fk. Red Riv....A-5		N. Fk. Red River...B-5	
Big Cabin Cr.....	J-2	Ephraim Creek.....	E-3	Pennington Cr.....	F-6
Big Creek	H-1	Fourche Maline Cr..J-5		Polecat Creek.....	G-3
Big Sandy Cr.....	F-6	Gaines Creek	H-5	Poteau River.....	K-4
Bird Creek	H-2	Glover Creek.....	K-7	Red River.....	B-7
Black Bear Cr.....	E-2	Grand River (see		Red Rock Cr.....	E-2
Black Fork Poteau		Neosho River).....	J-2	Round Pond Cr.....	E-1
River	K-5	Hay Stack Cr.....	A-5	Rush Creek	E-6
Blue River	G-7	Hominy Creek.....	G-2	Sallisaw Creek.....	K-4
Brazil Creek	J-5	Illinois River.....	J-3	Salt Creek.....	E-6
Buck Creek	F-1	Jackfork Creek	J-6	Salt Fk. Ark. Riv....C-1	
Buffalo Creek	B-1	Kiamichi River.....	J-7	Salt Fk. Red Riv....A-5	
Buffalo Creek	K-6	Kingfisher Creek....D-3		Salt Creek.....	F-5
Cache Creek	D-7	Kiowa Creek.....	A-1	Sanbois Creek.....	J-5
Caddo Creek	E-7	Lebos Creek.....	A-6	Sand Creek	G-1
Canadian River	C-4	Lee Creek.....	K-4	Spavinaw Creek....J-2	
Caney River	H-1	Little Deep Fk.....G-3		Spring River.....	K-1
Cedar Creek	J-6	Little River.....	G-5	Sugar Creek.....	D-4
Chicaskia River	E-1	Little River.....	K-7	Turkey Creek.....	D-3
Cimarron River	C-2	Little Washita		Verdigris River	H-2
Clear Boggy Cr.....	H-7	River	D-7	Walnut Bayou.....	E-7
Cottonwood Cr.	E-3	Lost Fork	K-1	Washita River.....	F-6
Deep Fork	H-4	Mill Creek	F-6	West Cache Cr.....	C-6
Deep Red Run.....	A-6	Mountain Fk.....	K-7	Wewoka Creek.....	G-5
Deep Red Run.....	C-6	Mud Creek.....	E-7	Wild Horse Cr.....	E-6
Deer Creek	C-4	Muddy Boggy Cr....H-7		Wolf Creek.....	A-2

**CLASON'S TABLE OF
SHORTEST RAILROAD MILEAGE
BETWEEN OKLAHOMA TOWNS**

Altus	202	292	107	210	224	252	135	196	370	178	304	57	267	317	147	282	251	184	265	144
Ardmore	202	246	95	146	160	50	127	188	228	132	102	145	125	187	101	154	185	97	199	307
Bartlesville	292	246	185	83	77	232	171	141	179	133	284	235	164	102	145	95	64	132	50	244
Chickasha	107	95	185	103	117	145	36	97	263	71	197	50	160	210	40	175	144	77	158	244
Cushing	210	146	83	103	14	196	89	106	186	50	248	153	130	109	63	102	71	49	57	209
Drumright	224	160	77	117	14	210	103	120	181	64	262	167	144	104	77	97	66	63	52	223
Durant	252	50	232	145	196	210	177	238	178	182	52	195	75	137	151	137	168	133	182	357
El Reno	135	127	171	36	89	103	177	61	249	42	229	86	146	196	26	161	130	65	144	180
Enid	196	188	141	97	106	120	238	61	250	56	290	147	205	173	87	166	135	124	121	103
Ft. Smith, Ark.	370	228	179	263	186	181	178	249	250	236	144	313	103	77	223	116	143	184	129	353
Guthrie	178	132	133	71	50	64	182	42	56	236	234	121	149	159	31	152	121	68	107	159
Hugo	304	102	284	197	248	262	52	229	290	144	234	247	127	189	203	189	220	199	234	409
Lawton	57	145	235	50	153	167	195	86	147	313	121	247	210	260	90	225	194	127	208	201
McAlester	267	125	164	160	130	144	75	146	205	103	149	127	210	62	120	85	116	81	114	326
Muskogee	317	187	102	210	109	104	137	196	173	77	159	189	260	62	170	39	66	143	52	276
Oklahoma City	147	101	145	40	63	77	151	26	87	223	31	203	90	120	170	135	104	37	118	206
Okmulgee	282	154	95	175	102	97	137	161	166	116	152	189	225	85	39	31	31	106	45	269
Sapulpa	251	185	64	144	71	66	168	130	135	143	121	220	194	66	104	31	77	77	14	238
Shawnee	184	97	132	77	49	63	133	65	124	184	68	199	127	143	37	106	77	91	243	243
Tulsa	265	199	50	158	57	52	182	144	121	129	107	234	208	52	118	45	14	91	224	224
Woodward	144	307	244	216	209	223	180	103	353	159	409	201	326	276	206	269	238	243	224	224

Where the columns opposite names cross, will be found the shortest railroad distance in miles between these cities.



MILEAGE MAP OF THE TRANSCONTINENTAL TRAILS OF THE UNITED STATES

SHOWING BEST ROADS - ROAD DISTANCES - PRINCIPAL CITIES

SCALE IN MILES

THE CLASON MAP CO. Chicago-Denver

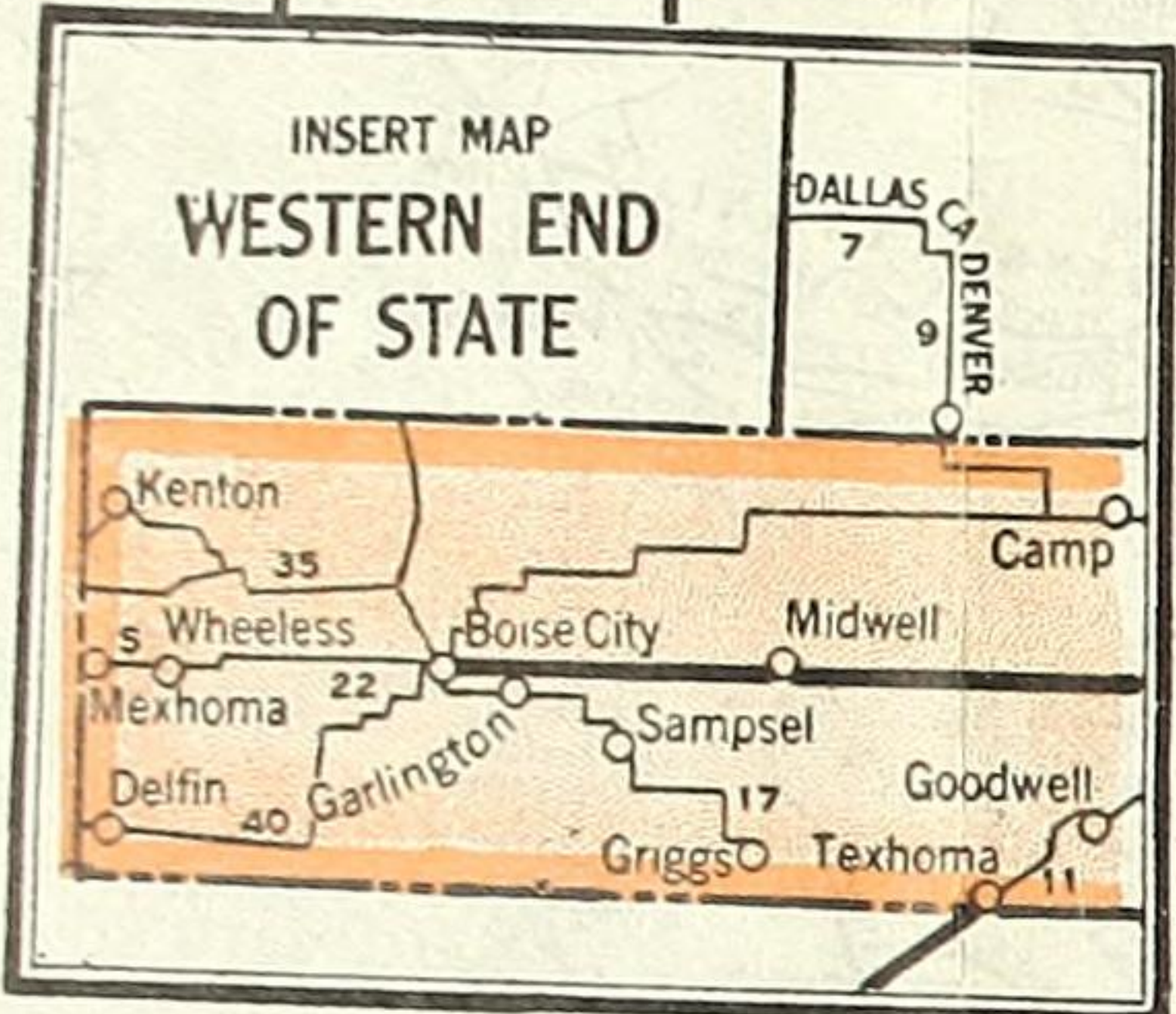
POLE MARKINGS

The following list gives the National Trails and other pointed trails. The official marker shown is posted along their routes. A key letter and figure show the location of trails on the map.

- | | | | | | | | | | | | | | | | | | | | | | | | | | |
|-------------------|------|----------------------|-----|---------------------------|------|--------------------|-----|----------------------|-----|--------------------|-----|----------------------------|------|-----------------------|------|----------------------|-----|-----------------|-----|-----------------|-----|------------------|-----|------------------------|-----|
| Atlantic Hy. | D-11 | Atlantic Pacific Hy. | E-4 | Bankhead Hy. | E-10 | Black & Yellow Tr. | C-7 | Colorado to Gulf Hy. | E-5 | Columbia River Hy. | B-2 | Cluster Battlefield Hy. | C-6 | Dallas-Canadian Drive | D-6 | Detroit-Lincoln-Deer | D-6 | Dice Highway | D-5 | | | | | | |
| Date Overland Hy. | F-9 | Duquesne Nat'l Hy. | B-3 | Gen. Washington Nat'l Hy. | D-7 | Jackson Highway | E-6 | Jefferson Highway | E-7 | King of Trails Hy. | D-7 | Kings Transcontinental Hy. | D-10 | Lee Highway | D-10 | Lincoln Highway | C-5 | Lone Star Route | E-8 | Lone Star Trail | F-9 | Meridian Highway | B-7 | Mississippi Valley Hy. | E-8 |

- | | | | | | | | | | | | | | | | | | | | | | | | | | |
|----------------------|-----|------------------------|-----|--------------------|-----|--------------------------|-----|------------------|-----|-------------------|-----|----------------|-----|-----------------|-----|-------------------------|-----|------------------|-----|--------------------------|-----|-----------------|-----|-------------------|-----|
| Natl. Old Trails Rd. | D-6 | Natl. Park to Park Hy. | C-4 | National Parks Hy. | D-4 | Natl. Roosevelt Mic. Tr. | B-3 | Old Oregon Trail | B-3 | Old Spanish Trail | F-2 | Oriskany Trail | E-5 | Pacific Highway | D-1 | Pikes Peak O. to O. Hy. | D-5 | South West Trail | T-6 | Theo. Roosevelt Int. Tr. | B-4 | Victory Highway | C-2 | Yellowstone Trail | B-6 |
|----------------------|-----|------------------------|-----|--------------------|-----|--------------------------|-----|------------------|-----|-------------------|-----|----------------|-----|-----------------|-----|-------------------------|-----|------------------|-----|--------------------------|-----|-----------------|-----|-------------------|-----|

COPYRIGHTED
O.M.C.
ALL RIGHTS RESERVED



POLE MARKINGS

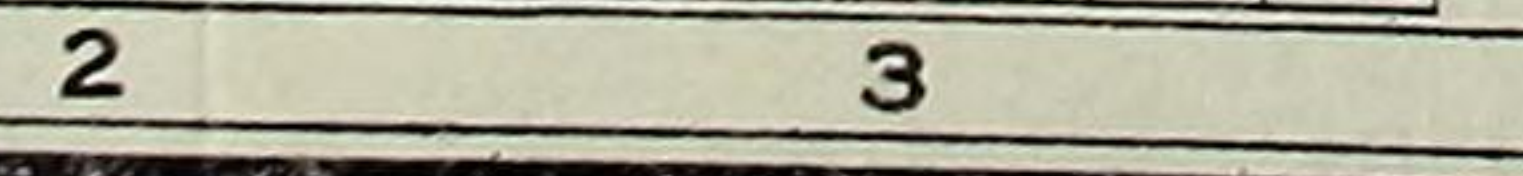
The following list gives the National Trails and other posted roads with the symbol used to designate them on the map. The official marker is shown if posted along their routes. A key letter and figure show the location of trails on the map.

SYMBOL	KEY	MARKER
A.Pk.Hy	Albert Pike Highway	B-4
A.P.Hy	Atlantic Pacific Hy	B-1
Cp.Rt	Capitol Route	B-9
C.B.Hy	Cotton Belt Hy.	G-8
D.C.D.	Dallas-Canadian-Denver	G-6
F.S.A.L.	Ft. Smith Amarillo-Air L.	E-4
J.Hy	Jefferson Highway	D-10
K.C.O.	K.C.O. Highway	D-7
K.F.T.	K.C.-Ft. S. Miami-T. S. L.	C-10
N.Hy	Meridian Highway	F-6
M.W.Hy	Mineral Wells Hy.	G-6
O.A.A.	Oklahoma Auto. Assoc.	C-4
O.Tr	Ozark Trails	F-6
P.Hy	Postal Highway	E-5
Seq.Tr	Sequoyah Trail	D-12
S.W.Tr	South West Trail	D-6
W.R.Tr	White River Trail	C-9

MILEAGE MAP OF THE BEST ROADS OF OKLAHOMA

SHOWING PRINCIPAL CITIES STATE HIGHWAYS ROAD DISTANCES

SCALE IN MILES



ROAD LEGEND

- Highly Improved Roads
- Other Thoroughfares
- Road Distances in Miles

Copyrighted by THE C. M. CO.

1 col. map 39x31 cm.

Property of
F. F. HINTZE, JR.

F 92.3
.C53x

BRIGHAM YOUNG UNIVERSITY



3 1197 23417 9585